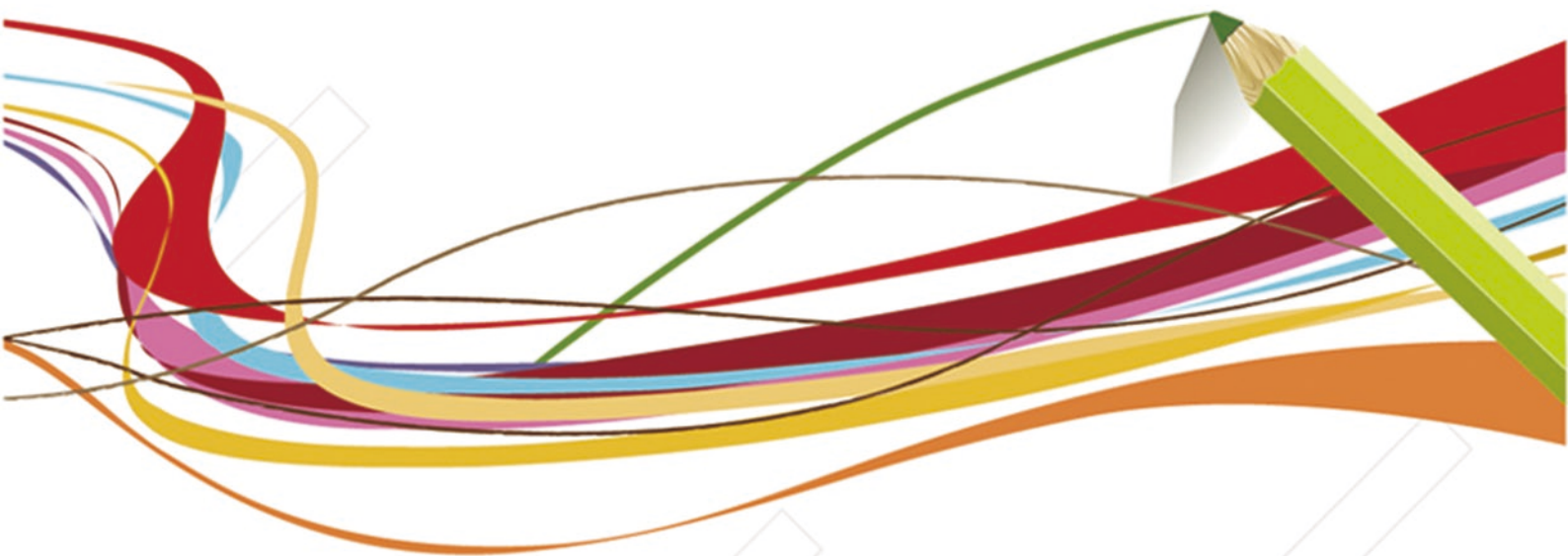


ECO Adhesive

SELF-ADHESIVE VINYL TILES



- > Home
- > Offices
- > Education
- > Retail
- > Show
- > Public building



Topflor

The ultimate flooring
The ultimate performance



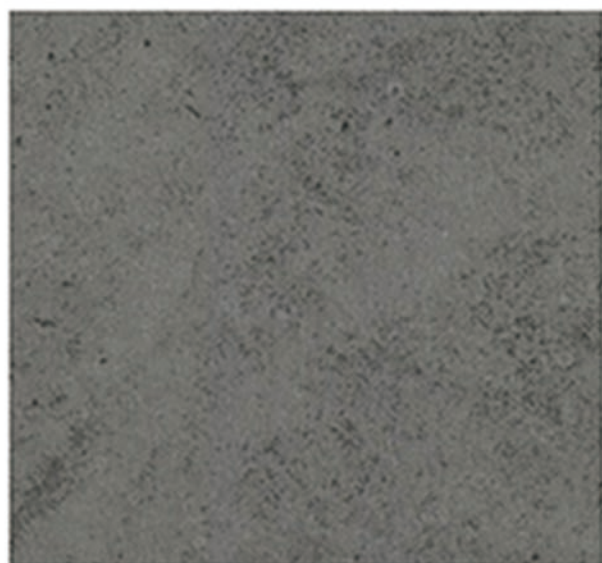
SA - 2026



SA - 2027



SA - 2028



SA - 2029



SA - 2030



SA - 2031



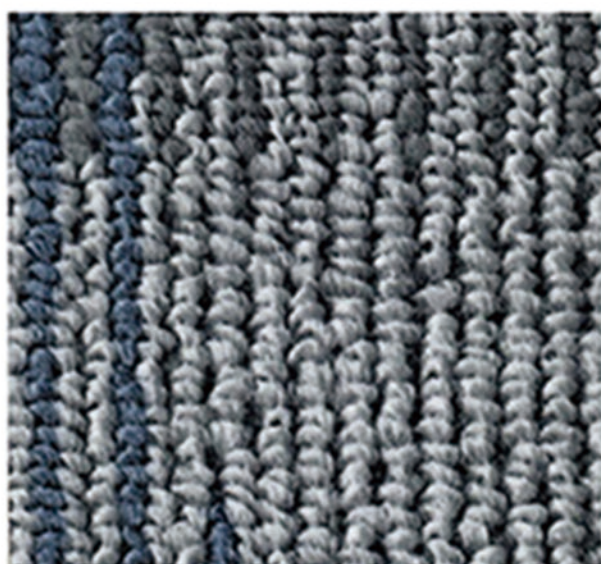
SA - 2032



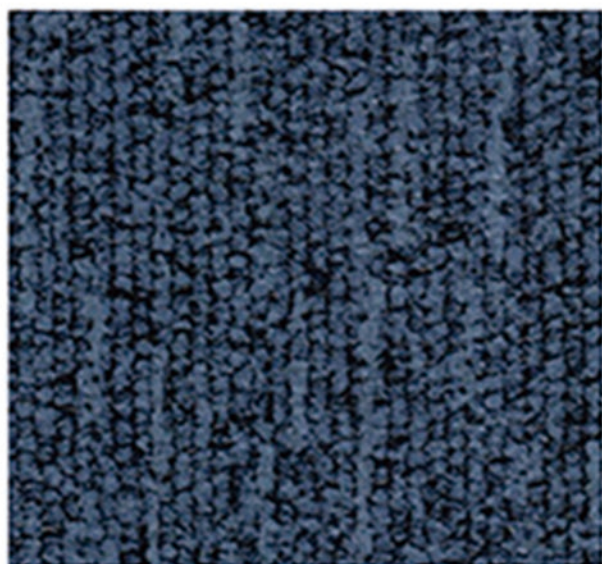
SA - 2033



SA - 2034



SA - 2035



SA - 2036



SA - 2037

ECO Adhesive

Size: 6"x36" (15.2cm x 91.4cm)
Thickness: 2.0mm



SA -2001



SA -2002



SA -2003



SA -2004



SA -2005

ECO Adhesive

Size: 6"×36" (15.2cm × 91.4cm)
Thickness: 2.0mm



SA - 2006



SA - 2007



SA - 2008



SA - 2009



SA - 2010

ECO Adhesive

Size: 6"x36" (15.2cm x 91.4cm)
Thickness: 2.0mm



SA-2011



SA-2012



SA-2013



SA-2014



SA-2015



SA-2016



SA-2017



SA-2018



SA-2019



SA-2020



SA - 2021



SA - 2022



SA - 2023

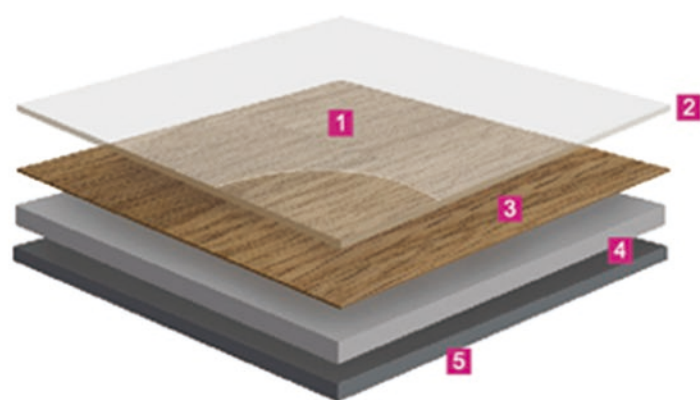


SA - 2024



SA - 2025

PRODUCT STRUCTURE



- 1. Surface embossing**
Textures close to real materials
- 2. Transparent wear layer**
Exceptional hardwearing and indentation resistant
- 3. High definition printing layer**
With great customisation possibilities
- 4. Unique composite structure**
Dimensional stability and resistance to tear and indentation
- 5. Pressure-sensitive adhesive backing**
Installation with no need of any other adhesives

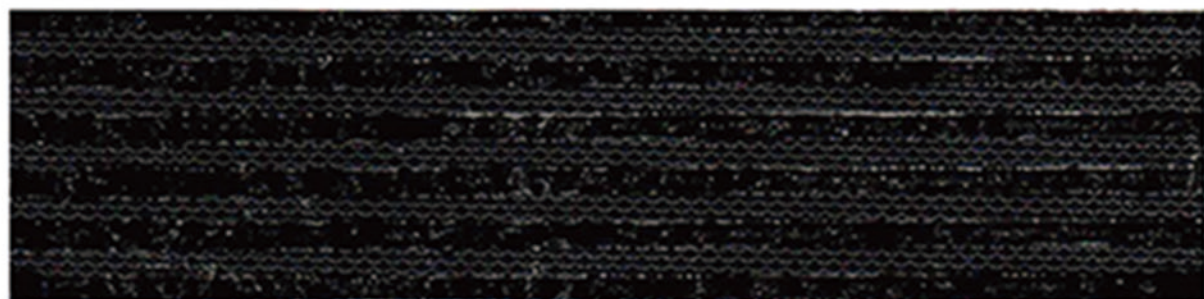
Durable and economical vinyl tile

- Realistic look of wood or tile flooring
- High-durability vinyl is stain and scuff resistant
- Low maintenance, no buffing or polishing needed
- Simple peel and stick installation

SURFACE AND BOTTOM



Surface



Bottom



Offices



Stores & Shops



Gym



Dance



Housing



Education



Healthcare



Aged Care

TECHNICAL INFORMATION

Installation Guide

- The subfloor surfaces must be level, flat, clean, dry, smooth, and free of movement. All surface imperfections should be filled and sanded with a portland cement-based latex patching compound.
- Room temperature must be maintained at 18°C or higher before and during installation.
- The flooring must be allowed to acclimate in the room to be installed for a minimum of 24 hours and be stacked flat on the floor to avoid bending the floor.
- Prior to installation, please ensure that both color and lot # are the same.

Maintenance

- Regularly sweep floor to remove sand and grit that can scratch floor.
- For best results, use only water with a mop. Avoid flooding the floor with too much water.
- For heavily soiled areas, use a neutral pH balanced floor cleaner.
- Use caution when lifting boxes.
- Promptly remove any standing water to avoid slippage.
- Keep Wood Collection on the flat surface to keep it from warping.

Size & Packing

	Size		Thickness	/ BOX	/ BOX
Plank	15.2cm×91.4cm	6"×36"	2.0mm	36pcs	5.02m ²
Tile	45.7cm×45.7cm	18"×18"	2.0mm	30pcs	6.27m ²

Technical Data

Classification	Standard	Wood 2.0	Stone 2.0	Carpet 2.0
Total thickness	EN 428	2.0mm	2.0mm	2.0mm
Wear layer thickness	EN 429	0.1mm	0.1mm	0.1mm
Total weight	EN 430	3450g/m ²	3450g/m ²	3450g/m ²
Classification	EN 685	22	22	22
Reaction to fire	EN 13501-1	Bfl-s1	Bfl-s1	Bfl-s1
Electrical properties	EN 1815	<2kV	<2kV	<2kV
Slip resistance	DIN 51130	R9-R10	R9-R10	R9-R10
Curl resultant to heat	EN 434	≤2mm	≤2mm	≤2mm
Residual indentation	EN 433	≤0.05mm	≤0.05mm	≤0.05mm
Impact sound reduction	EN ISO 717-2	4dB	4dB	4dB
Castor chair	EN 425	No damage	No damage	No damage
Thermal resistance	EN ISO 12524	0.25W/(m.K)	0.25W/(m.K)	0.25W/(m.K)
Light fastness	EN ISO 105-B02	≥6	≥6	≥6
Chemical resistance	EN 423	Good	Good	Good

CE MARKING



EN 14041

