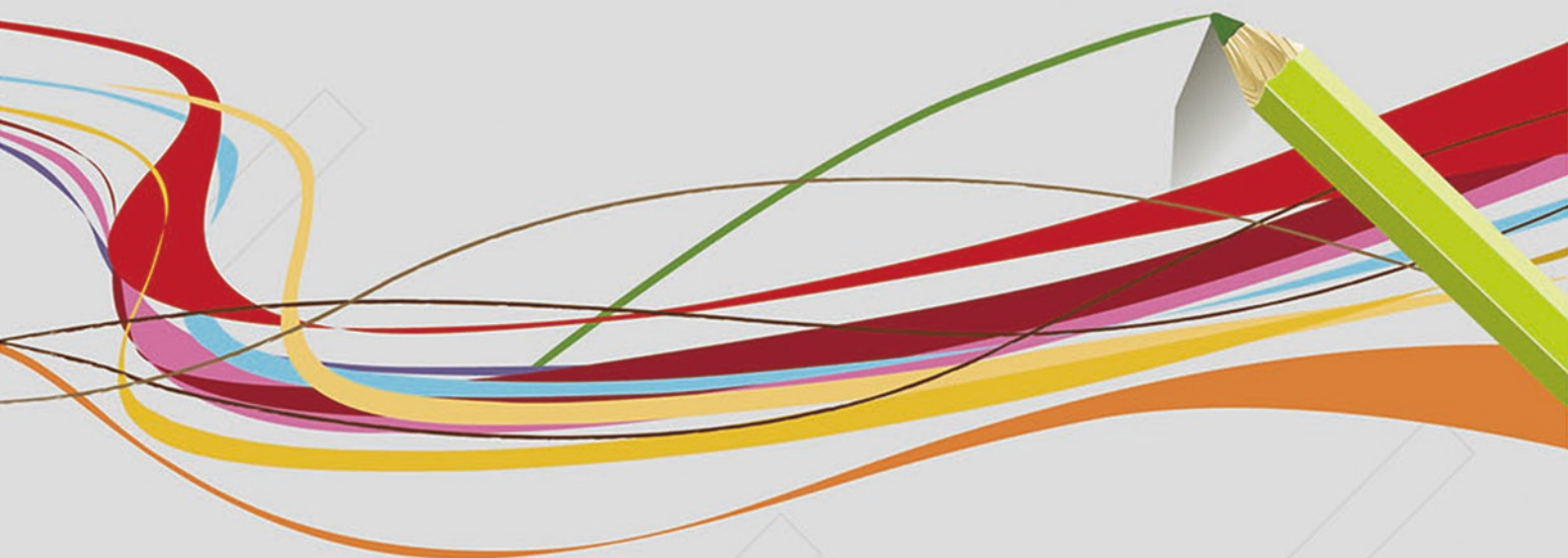
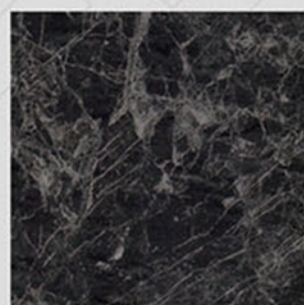


ECO Classic

LUXURY VINYL TILES



- > Home
- > Offices
- > Education
- > Retail
- > Show
- > Public building



Topflor

The ultimate flooring
The ultimate performance

ECO Classic



CA-2701



CA-2702



CA-2703



CA-2704



CA-2705

Size: 6"×36" (15.2cm × 91.4cm) / 7.25"×48"(18.4cm × 121.9cm) / 9"×48"(22.9cm × 121.9cm)
Thickness: 2.0mm / 2.5mm / 3.0mm / 4.0mm / 5.0mm



CA - 2706



CA - 2707



CA - 2708



CA - 2709



CA - 2710

ECO Classic



CA-2711



CA-2712



CA-2713



CA-2714



CA-2715

Size: 6"×36" (15.2cm × 91.4cm) / 7.25"×48"(18.4cm × 121.9cm) / 9"×48"(22.9cm × 121.9cm)
Thickness: 2.0mm / 2.5mm / 3.0mm / 4.0mm / 5.0mm



CA - 2716



CA - 2717



CA - 2718



CA - 2719



CA - 2720

ECO Classic



CA - 2721



CA - 2722



CA - 2723



CA - 2724



CA - 2725

ECO Classic



CA - 2726



CA - 2727



CA - 2728



CA - 2729



CA - 2730

Size: 18"×18" (45.7cm × 45.7cm) / 12"×24" (30.5cm × 61.0cm)

Thickness: 2.0mm / 2.5mm / 3.0mm / 4.0mm / 5.0mm



CA-2731



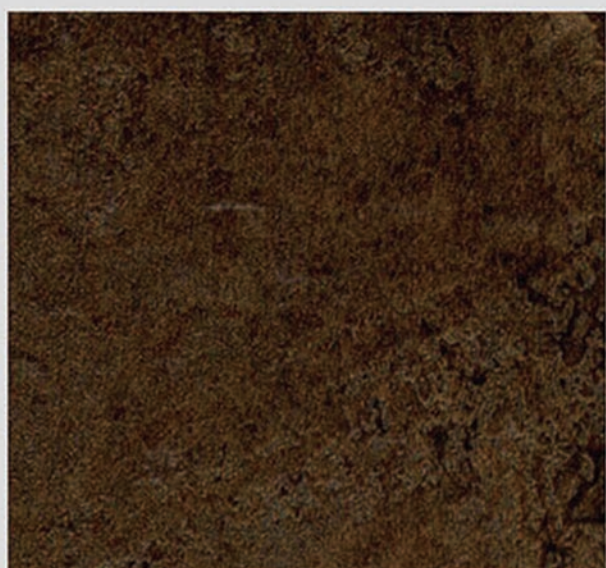
CA-2732



CA-2733



CA-2734

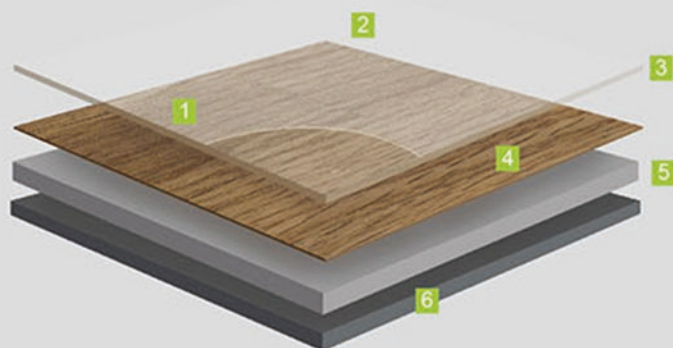


CA-2735



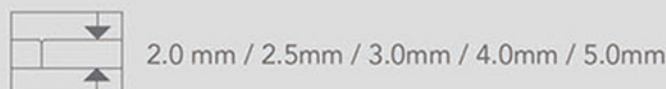
CA-2736

PRODUCT STRUCTURE



- 1. Surface embossing**
Textures close to real materials
- 2. PUR reinforcement**
Extreme resistance and easy low cost maintenance
- 3. Transparent wear layer**
Exceptional hardwearing and indentation resistant
- 4. High definition printing layer**
With great customisation possibilities
- 5. Unique composite structure**
Dimensional stability and excellent resistance to tear and indentation
- 6. PVC backing**
Suitable for either floating or glue-down installation

AVAILABLE DIMENSIONS



THE ADVANTAGES OF LVT



Great Design Options

- 200+ colour options and 8 different surface aspects.
- Plank and tile dimensions that you can combine to compose your own flooring expressions.



Hard wearing and easy cleaning

- Treated with pur surface protection that hardens the surface and simplifies cleaning and maintenance through reduced use of water, energy and chemical detergents.



Water resistant

- Suitable for wet areas such as bathrooms, kitchens, store rooms, basements, etc.
- Our waterproof floors keep their shape in those damp circumstances – they don't swell up and simply repel the water.



People-friendly solution

- Helps improve indoor air quality with VOC emissions below quantifiable levels, under 10µg/m³ after 28 days.
- Uses phthalate-free technology based on alternative plasticizers.

TECHNICAL INFORMATION

Installation Guide

- The subfloor surfaces must be level, flat, clean, dry, smooth, and free of movement. All surface imperfections should be filled and sanded with a portland cement-based latex patching compound.
- Room temperature must be maintained at 18 °C or higher before and during installation.
- The flooring must be allowed to acclimate in the room to be installed for a minimum of 24 hours and be stacked flat on the floor to avoid bending the floor.
- Prior to installation, please ensure that both color and lot # are the same.

Maintenance

- Regularly sweep floor to remove sand and grit that can scratch floor.
- For best results, use only water with a mop. Avoid flooding the floor with too much water.
- For heavily soiled areas, use a neutral pH balanced floor cleaner.
- Use caution when lifting boxes.
- Promptly remove any standing water to avoid slippage.
- Keep Wood Collection on the flat surface to keep it from warping.

Size & Packing

	Size		Thickness	/ BOX	/ BOX
Plank	15.2cm×91.4cm	6"×36"	2.5mm	24pcs	3.34m ²
Tile	45.7cm×45.7cm	18"×18"	2.5mm	20pcs	4.18m ²

Technical Data

Classification	Standard	Classic 2.0	Classic 2.5	Classic 3.0
Total thickness	EN 428	2.0mm	2.5mm	3.0mm
Wear layer thickness	EN 429	0.2mm	0.3mm	0.3mm
Total weight	EN 430	3450g/m ²	4560g/m ²	5500g/m ²
Surface treatment	---	PUR	PUR	PUR
Classification	EN 685	33-42	33-42	33-42
Reaction to fire	EN 13501-1	Bfl-s1	Bfl-s1	Bfl-s1
Electrical properties	EN 1815	<2kV	<2kV	<2kV
Slip resistance	DIN 51130	R9-R10	R9-R10	R9-R10
Abrasion group	EN 660-2	Group T	Group T	Group T
Curl resultant to heat	EN 434	≤2mm	≤2mm	≤2mm
Residual indentation	EN 433	≤0.05mm	≤0.05mm	≤0.05mm
Impact sound reduction	EN ISO 717-2	4dB	5dB	6dB
Castor chair	EN 425	No damage	No damage	No damage
Thermal resistance	EN ISO 12524	0.25W/(m.K)	0.25W/(m.K)	0.25W/(m.K)
Light fastness	EN ISO 105-B02	≥6	≥6	≥6
Chemical resistance	EN 423	Good	Good	Good

