

# ARTLINE

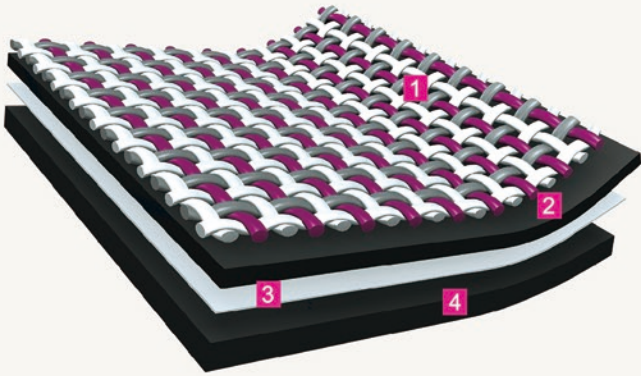
WOVEN VINYL FLOORING



**Topflor**

The ultimate flooring  
The ultimate performance

## WOVEN VINYL FLOORING STRUCTURE



1. Premium woven vinyl fabric  
High-class and in-house designs to make our floor product elegant, dimensional and fashion-leading
2. Stabilizing composite layer  
Extreme resistance and easy low cost maintenance
3. Fiber glass reinforcement  
Unique dimensional stability
4. Compact foam backing  
Suitable for either floating or glue-down installation

## DIFFERENT SHAPES OF TILES



Tile



Plank



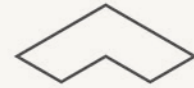
Triangle



Diamond

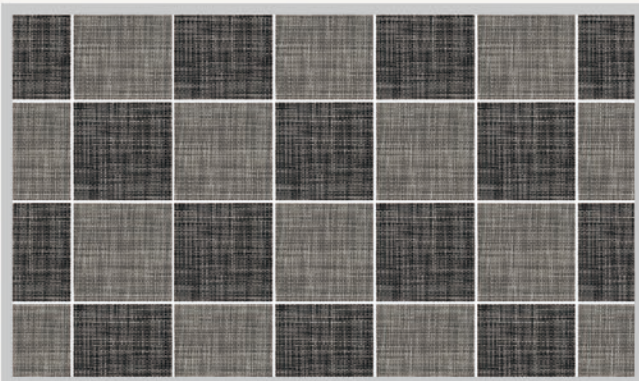


Hexagon



Wing

## CHOICE OF LAYOUT PATTERNS



Checkerboard Pattern



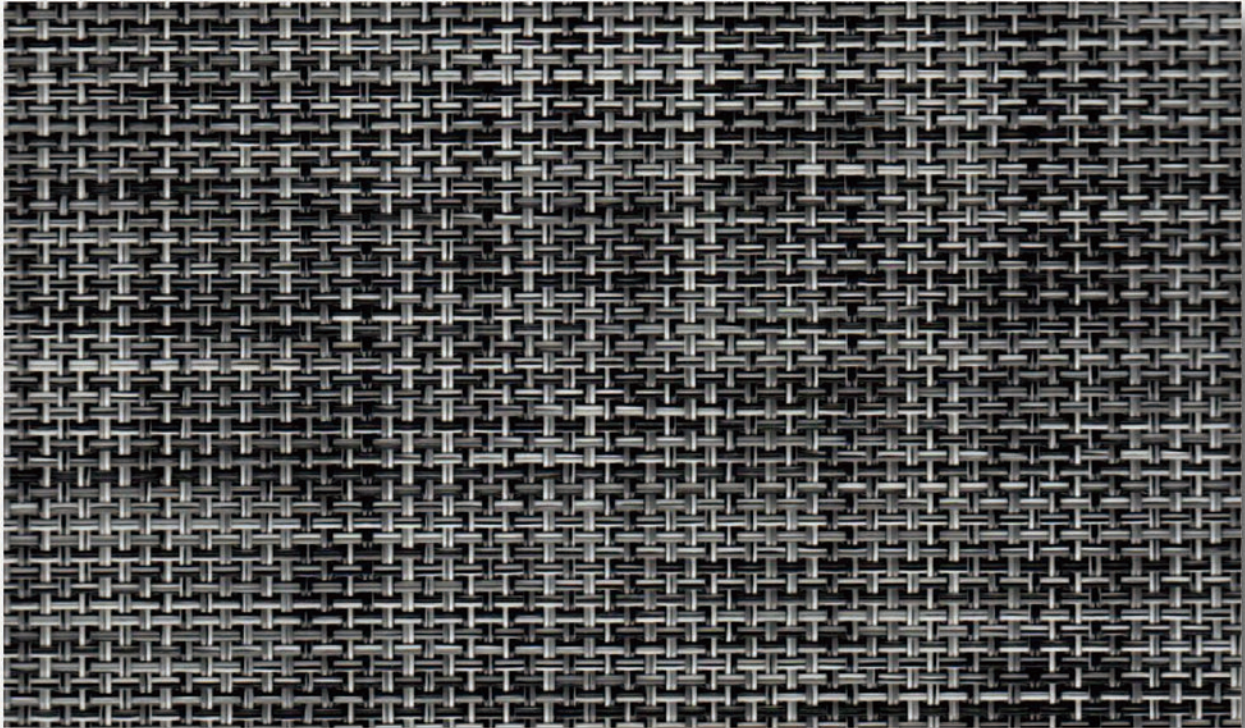
Herringbone Pattern



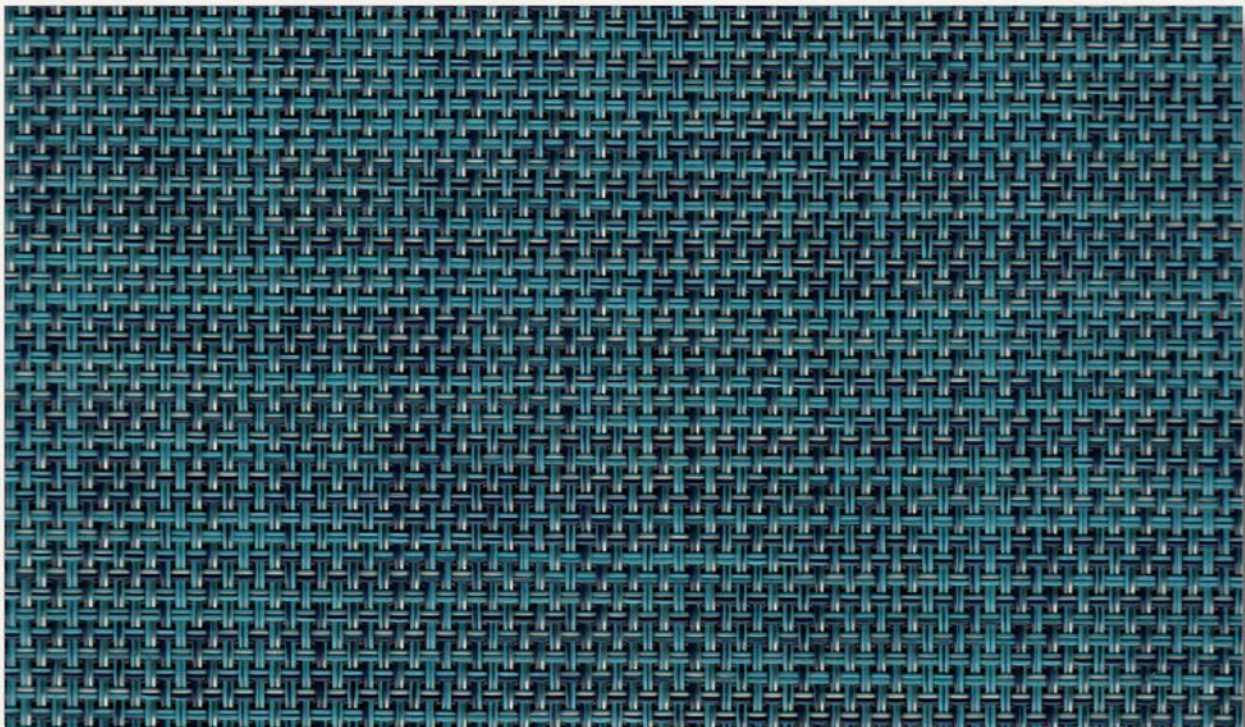
Random Joints Pattern



Hexagonal Pattern




3201 Medium Grey




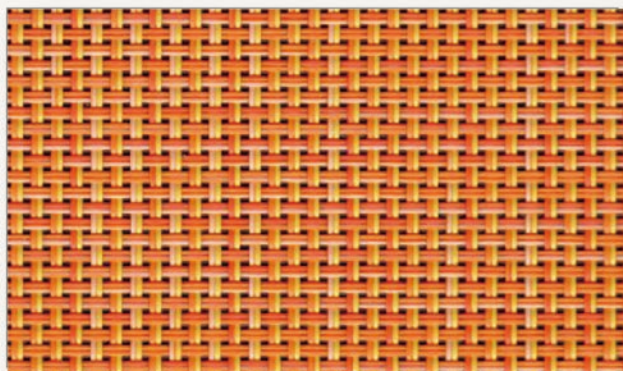
3202 Teal



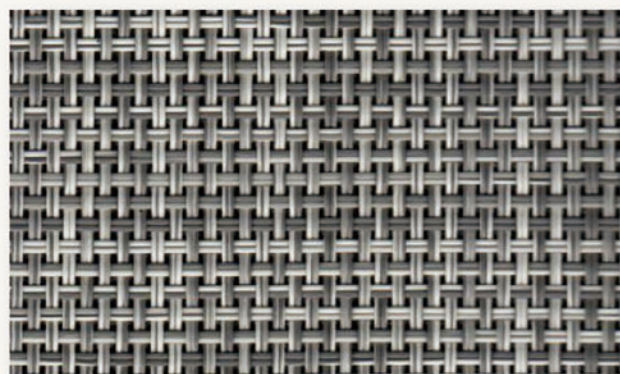
# ARTLINE

 Roll Size: 200cm × 20m

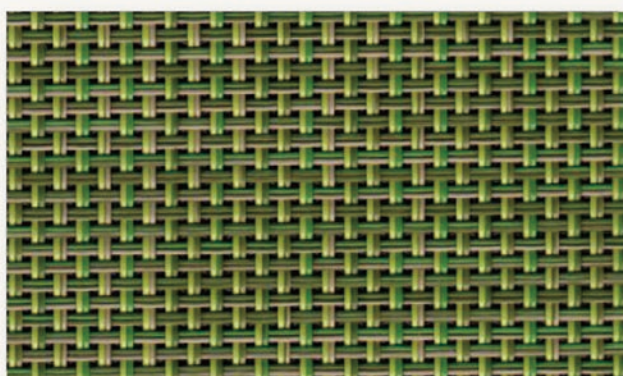
 Tile Size: 50cm × 50cm



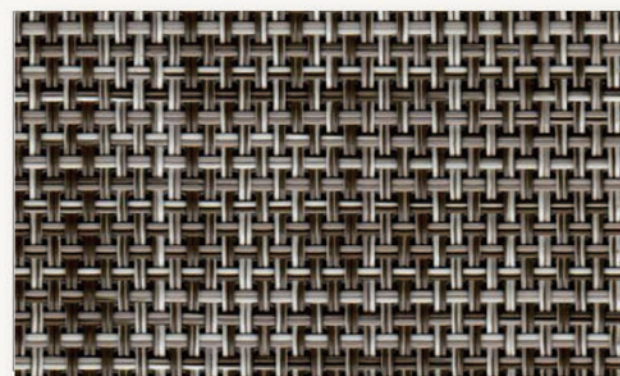
3203 Orange



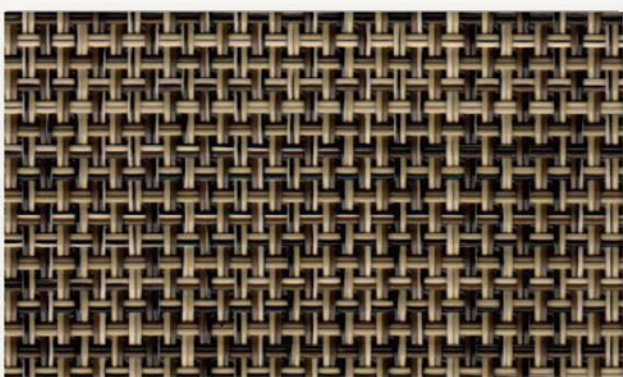
3204 Light Grey



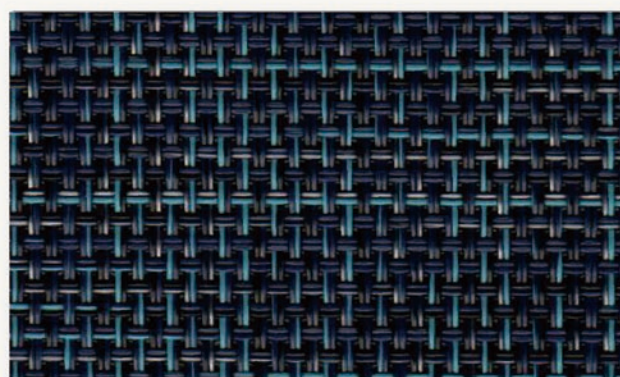
3205 Green



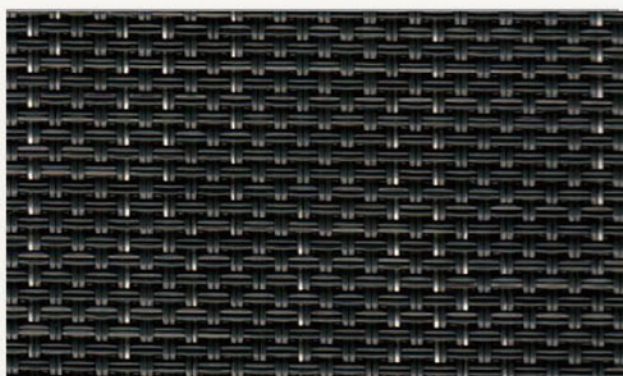
3206 Coffee



3207 Brown



3208 Dark Blue



3209 Dark Grey



3210 Black





Offices



Stores & Shops



Gym



Housing



Education



Healthcare



Aged Care

# ARTLINE

Artline is a unique woven vinyl flooring that provides the look and feel of textile flooring with all the advantages of vinyl flooring. The system that is durable, easily cleaned, and has high performance ratings in residential and commercial applications. It is an excellent choice for shops, hotels, offices, healthcare, fitness center and leisure. Artline collection is available in 50x50cm tiles, 2m wide rolls, shaped tiles and wall covering.

## Product Features

















- Ability to create tailored and completely bespoke designs
- Vast color selection
- Combine patterns for stunning results
- Non-slip surface dries quickly, making it ideal for wet areas
- Significantly lower cleaning and maintenance costs
- 10 – 15 year guarantees
- Easy to remove, relocate and replace

## Maintenance

Sweep or vacuum regularly to remove dirt. Wipe up spills promptly to avoid stains.

Using a vacuum with a roller brush is best for removing trapped dirt from the texture of Artline flooring.

## Technical Data

	Classification	ISO 10874	33 Heavy commercial
	Weight	ISO 8543	4.0 kg/m <sup>2</sup>
	Thickness	ISO 1765	3.2 mm
	Roll dimension	EN 426	200 cm - 20 m
	Tile dimension	EN 994	50 × 50 cm. 16 pcs/box, 4 sqm
	Castor Chair	EN 985	Continuous use
	Body Voltage	ISO 6356	< 2 kV
	Thermal resistance	ISO 8302	Suitable for underfloor heating
	Impact sound insulation	EN ISO 14140	14 dB
	Airborne sound absorption	EN ISO 354	0.05
	Residual indentation	EN ISO 24343-1	< 0.2 mm
	Colour fastness to light	EN ISO 105-B02	8
	Dimensional stability	ISO 2551	≤0.1%
	Slip resistance	DIN 51130 EN 13893	R9 ≥0.3
	Fire rating	EN 13501-1 ASTM E 648	Bfl - s1 Class 1
	Certification	EN14041	No 0402-CPR-419007

According to product standard EN 15114, ARTLINE woven vinyl flooring is **100% PHTHALATE FREE**