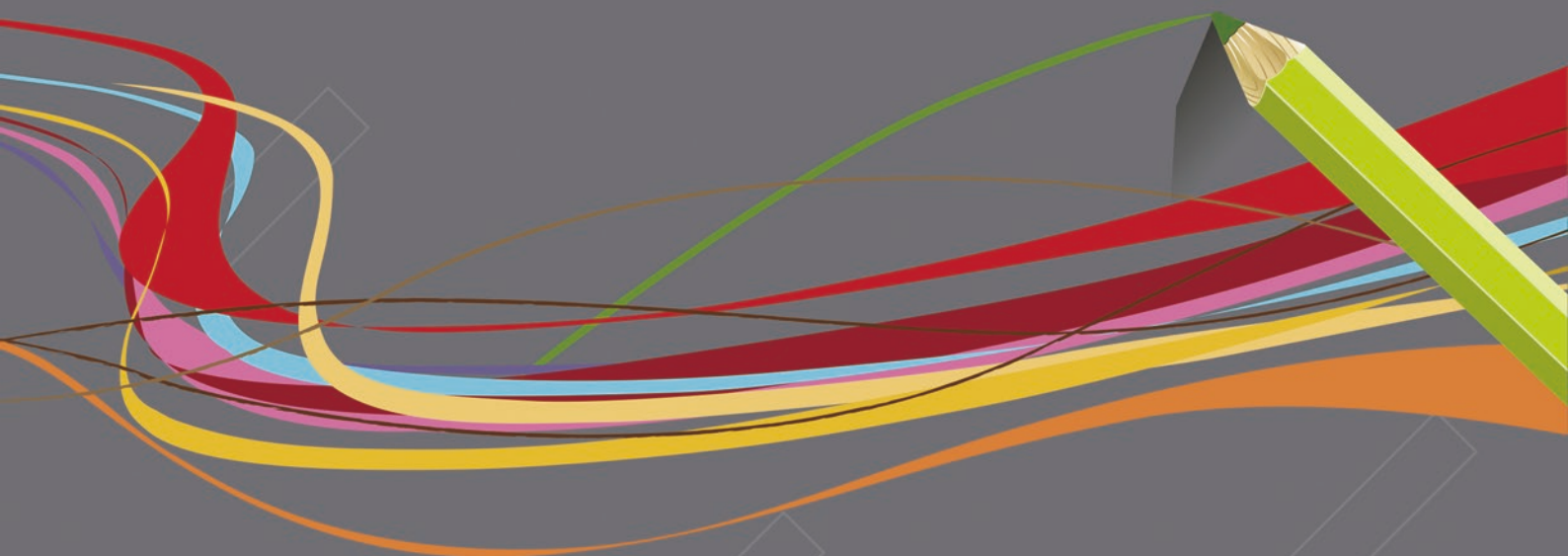


Wood Collection

LUXURY VINYL TILES



- > Offices
- > Education
- > Healthcare
- > Retail
- > Show
- > Public building



Topflor

The ultimate flooring
The ultimate performance

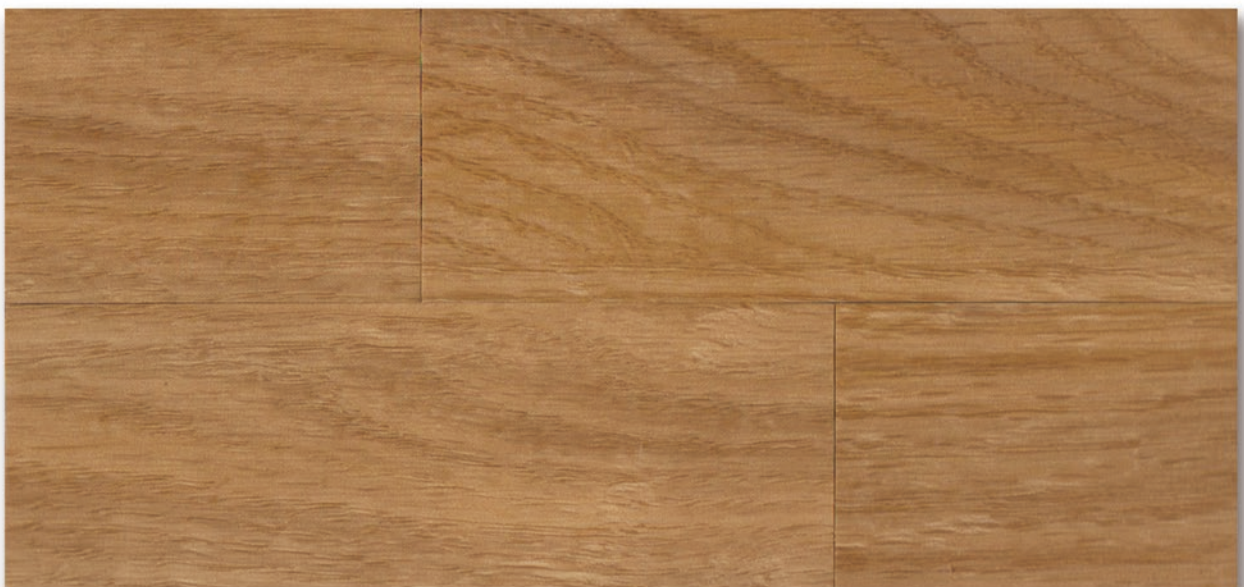
Wood Collection



WD - 3001



WD - 3002



WD - 3003

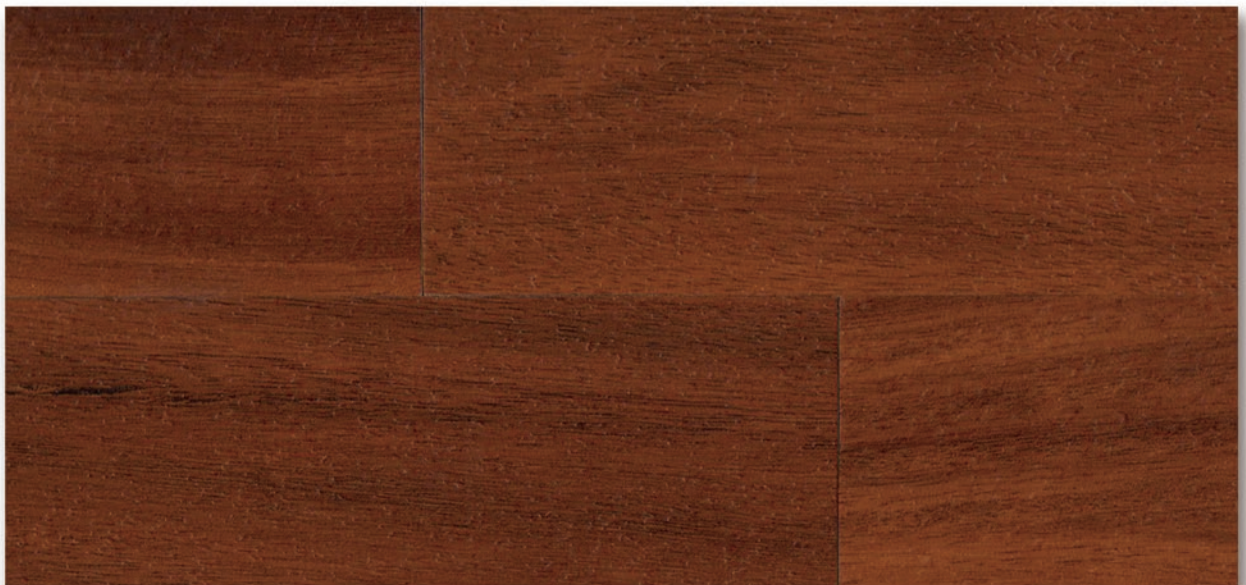
Size: 6"×36" (15.2cm × 91.4cm) / 7.25"×48"(18.4cm × 121.9cm)
Thickness: 2.0mm / 2.5mm / 3.0mm / 4.0mm / 5.0mm



WD - 3004



WD - 3005

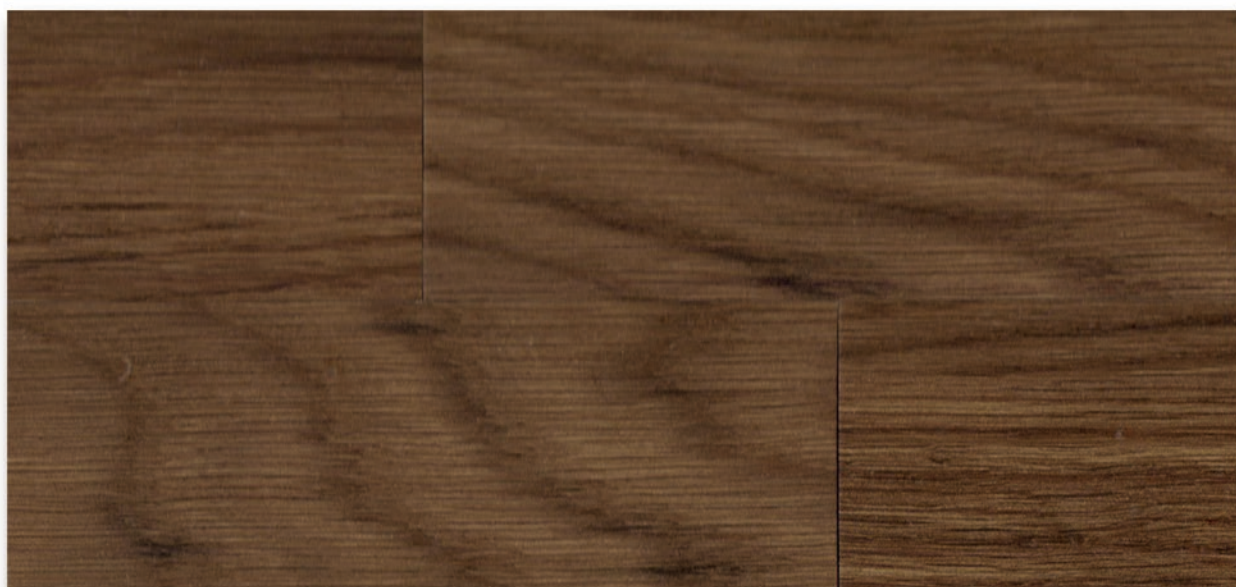


WD - 3006

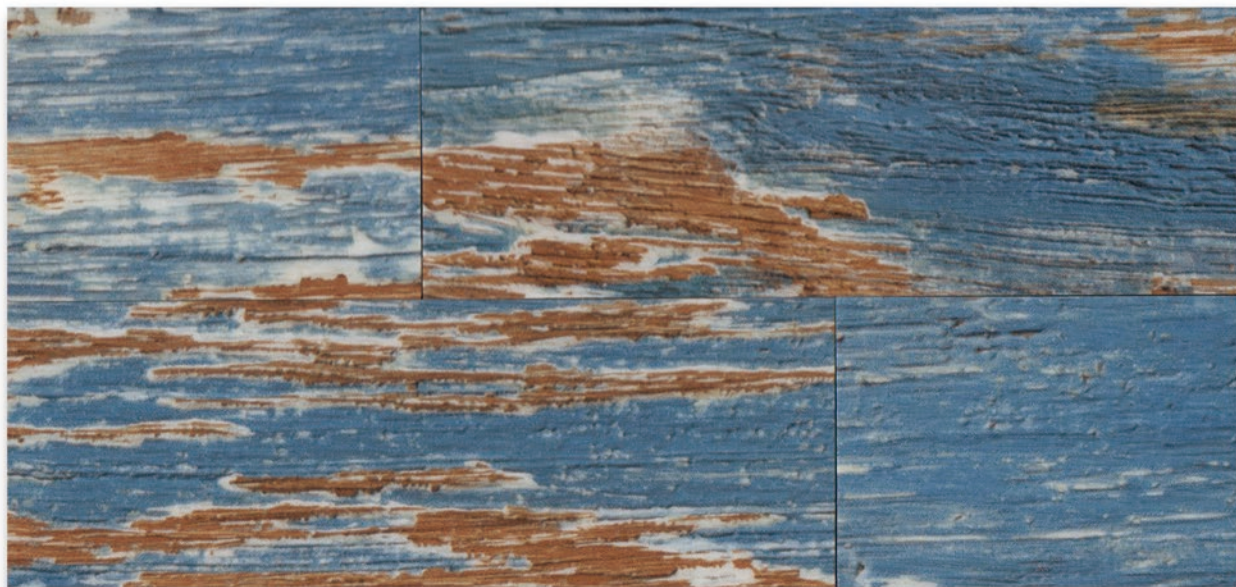
Wood Collection



WD - 3007



WD - 3008



WD - 3009

Size: 6"×36" (15.2cm × 91.4cm) / 7.25"×48"(18.4cm × 121.9cm)
Thickness: 2.0mm / 2.5mm / 3.0mm / 4.0mm / 5.0mm



WD-3010



WD-3011



WD-3012

Wood Collection



WD-3013



WD-3014



WD-3015

AVAILABLE THICKNESS



2.0mm



2.5mm

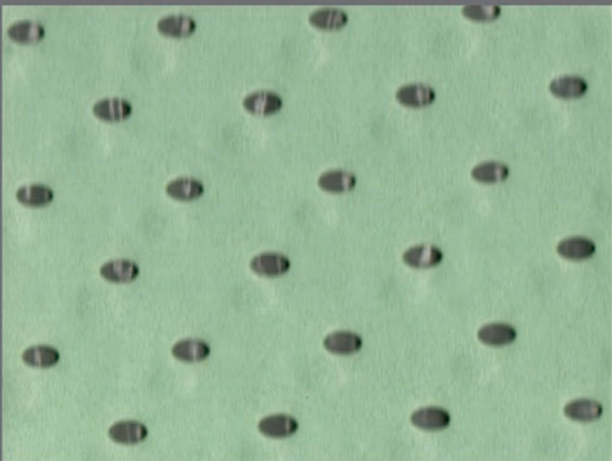


3.0mm



4.0mm

ACOUSTIC UNDERLAY



PE foam

Size: 1m×20m×2.0mm



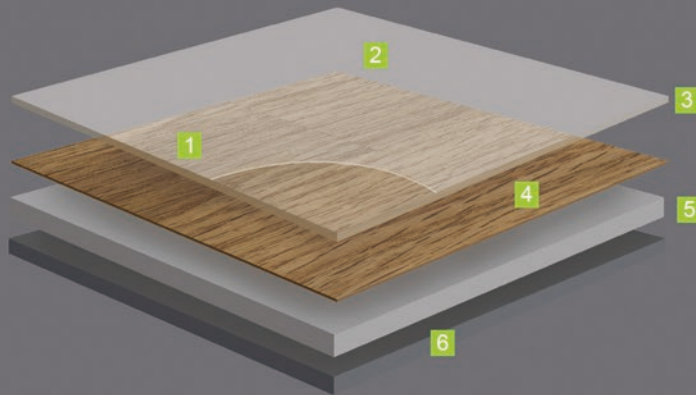
Rubber foam

Size: 1m×20m×3.0mm

- Protection against humidity
- Powerful acoustic insulation

- Greater comfort
- Quick and easy to install

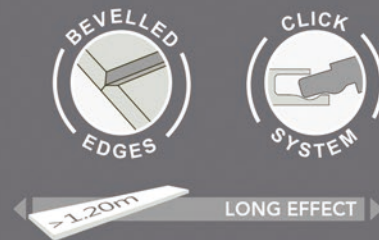
STRUCTURE OF WOOD



1. Surface embossing
Textures close to real materials
2. PUR reinforcement
Extreme resistance and easy low cost maintenance
3. Transparent wear layer
Exceptional hardwearing and indentation resistant
4. High definition printing layer
With great customisation possibilities
5. Unique composite structure
Dimensional stability and excellent resistance to tear and indentation
6. PVC backing
Suitable for either floating or glue-down installation

AVAILABLE DIMENSIONS

- 15.2 × 91.4 cm
- 18.4 × 121.9 cm
- 45.7 × 45.7 cm
- 45.7 × 91.4 cm



THE ADVANTAGES OF LVT



Great Design Options

- 200+ colour options and 8 different surface aspects.
- Plank and tile dimensions that you can combine to compose your own flooring expressions.



Hard wearing and easy cleaning

- Treated with pur surface protection that hardens the surface and simplifies cleaning and maintenance through reduced use of water, energy and chemical detergents.



Water resistant

- Suitable for wet areas such as bathrooms, kitchens, store rooms, basements, etc.
- Our waterproof floors keep their shape in those damp circumstances – they don't swell up and simply repel the water.



People-friendly solution

- Helps improve indoor air quality with VOC emissions below quantifiable levels, under 10µg/m³ after 28 days.
- Uses phthalate-free technology based on alternative plasticizers.



Great design options

A people friendly solution

The best solution for every area and every application



Offices



Stores & Shops



Gym



Dance



Housing



Education



Healthcare



Aged Care

TECHNICAL INFORMATION

Installation Guide

- The subfloor surfaces must be level, flat, clean, dry, smooth, and free of movement. All surface imperfections should be filled and sanded with a portland cement-based latex patching compound.
- Room temperature must be maintained at 18°C or higher before and during installation.
- The flooring must be allowed to acclimate in the room to be installed for a minimum of 24 hours and be stacked flat on the floor to avoid bending the floor.
- Prior to installation, please ensure that both color and lot # are the same.

Maintenance

- Regularly sweep floor to remove sand and grit that can scratch floor.
- For best results, use only water with a mop. Avoid flooding the floor with too much water.
- For heavily soiled areas, use a neutral ph balanced floor cleaner.
- Use caution when lifting boxes.
- Promptly remove any standing water to avoid slippage.
- Keep Wood Collection on the flat surface to keep it from warping.

Size & Packing

| Size | Thickness | / BOX | / BOX |
|-----------------------------|-------------------|-------|---------------------|
| 15.2cm×91.4cm 6"×36" | 2.0mm/2.5mm/3.0mm | 24pcs | 3.344m ² |
| 18.4cm×121.9cm 7.25"×48" | 2.0mm/2.5mm/3.0mm | 15pcs | 3.367m ² |

Technical Data

| Classification | Standard | Wood 2.0 | Wood 2.5 | Wood 3.0 |
|------------------------|----------------|----------------------|----------------------|----------------------|
| Total thickness | EN 428 | 2.0mm | 2.5mm | 3.0mm |
| Wear layer thickness | EN 429 | 0.2mm | 0.3mm | 0.3mm |
| Total weight | EN 430 | 3450g/m ² | 4560g/m ² | 5500g/m ² |
| Surface treatment | --- | PUR | PUR | PUR |
| Classification | EN 685 | 33-42 | 33-42 | 33-42 |
| Reaction to fire | EN 13501-1 | Bfl-s1 | Bfl-s1 | Bfl-s1 |
| Electrical properties | EN 1815 | <2kV | <2kV | <2kV |
| Slip resistance | DIN 51130 | R9-R10 | R9-R10 | R9-R10 |
| Abrasion group | EN 660-2 | Group T | Group T | Group T |
| Curl resultant to heat | EN 434 | ≤2mm | ≤2mm | ≤2mm |
| Residual indentation | EN 433 | ≤0.05mm | ≤0.05mm | ≤0.05mm |
| Impact sound reduction | EN ISO 717-2 | 4dB | 5dB | 6dB |
| Castor chair | EN 425 | No damage | No damage | No damage |
| Thermal resistance | EN ISO 12524 | 0.25W/(m.K) | 0.25W/(m.K) | 0.25W/(m.K) |
| Light fastness | EN ISO 105-B02 | ≥6 | ≥6 | ≥6 |
| Chemical resistance | EN 423 | Good | Good | Good |

