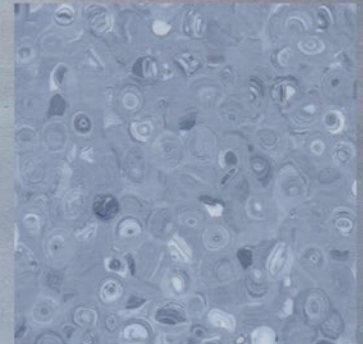
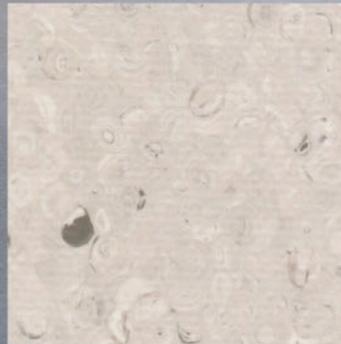


Evolution

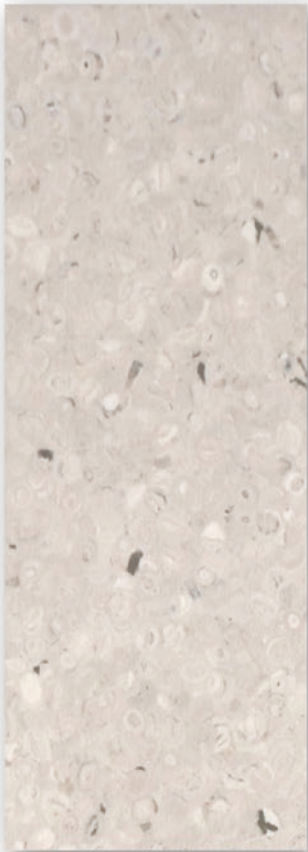
Homogeneous Vinyl

- > Healthcare
- > Education
- > Offices
- > Leisure
- > Retail
- > Public building

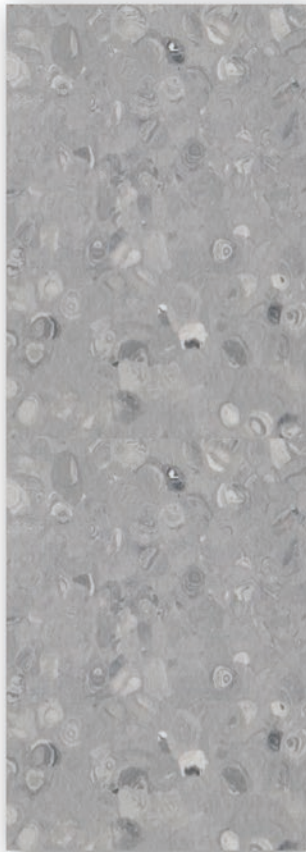


Topflor

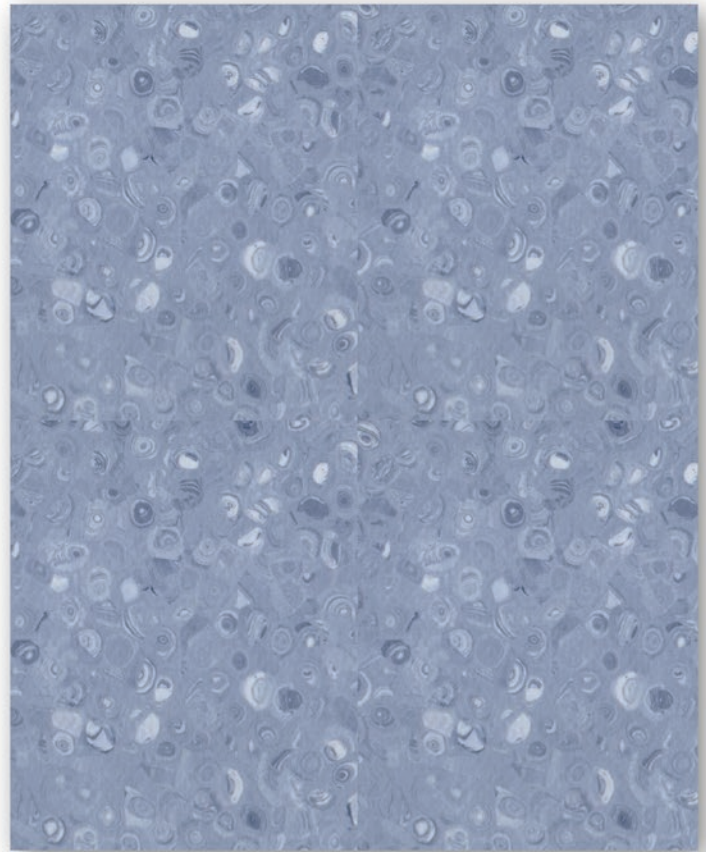
The ultimate flooring
The ultimate performance



EL-1001



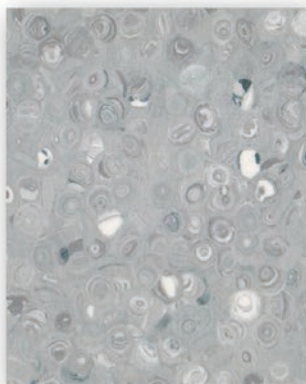
EL-1015



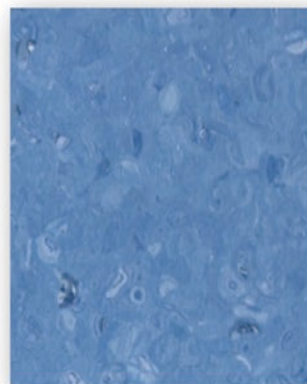
EL-1013



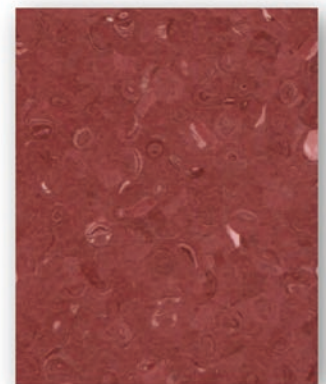
EL-1008



EL-1012



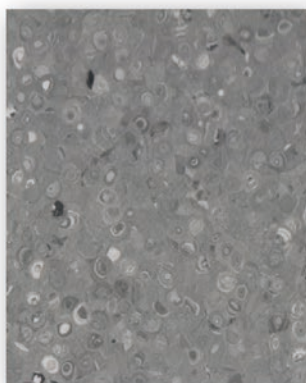
EL-1019



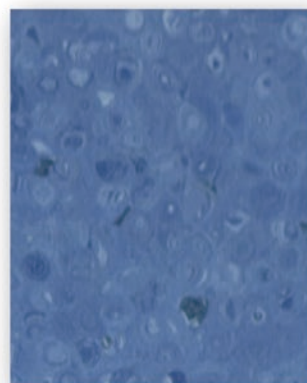
EL-1017



EL-1005



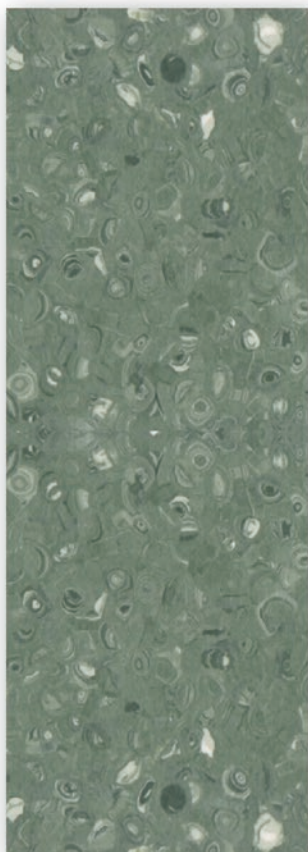
EL-1016



EL-1014



EL-1018



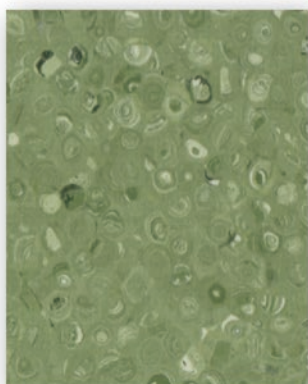
EL-1009



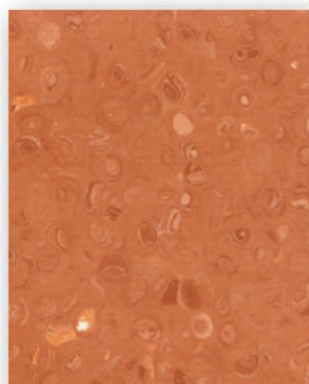
EL-1021



EL-1002



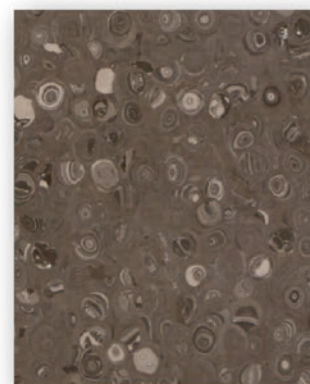
EL-1010



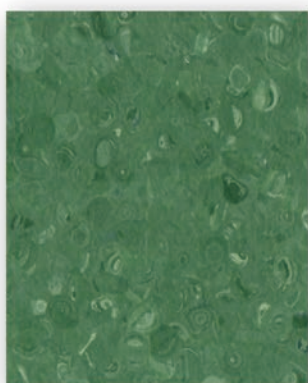
EL-1006



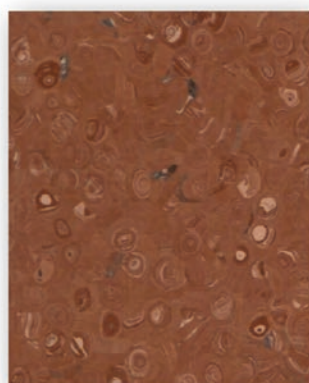
EL-1003



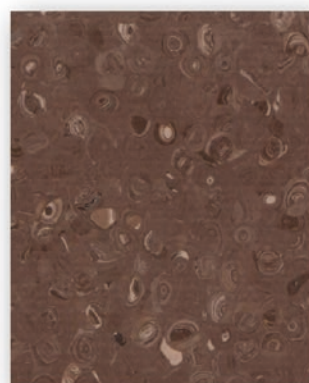
EL-1004



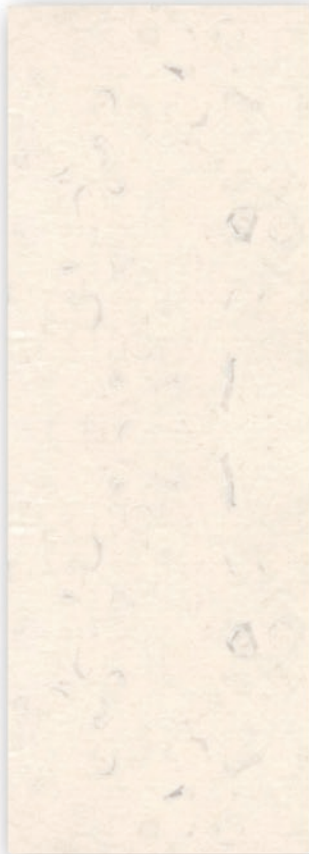
EL-1011



EL-1007



EL-1020



EL- 0201



EL- 0204



EL- 0321



EL- 0264



EL- 0225



EL- 0211



EL- 0203



EL- 0207



EL- 0205



EL- 0365





Designed for performance

Creating the ultimate flooring experience

The best solution for every area and every application



Hospital, clinics and



Offices



Public buildings



School, universities



Transport



Shops



Hotels



Industry

Evolution



Evolution is a durable, multi-purpose homogeneous vinyl flooring with non-directional designs. It is an ideal solution for heavy traffic areas such as healthcare, education, retail, offices and public buildings. Evolution has a surface treated with PUR reinforcement, which means no wax and no polish for life and excellent life cycles costs. The PUR also provides a good base for future maintenance procedures.

INSTALLATION

Evolution homogenous vinyl should be stored vertically. Installation should be made in accordance with installation guidelines supplied and regularly updated by our technical department. Installation should be carried out in accordance with local standards. Subfloor to be smooth, hard, clean and dry prior to laying. Where applicable the subfloor must incorporate an effective Damp Proof Membrane. The material must be allowed to acclimatise 24 hours prior to installation in a room temperature of between 18-24°C. All seams must be heat welded using the matching weld rod.

MAINTENANCE

Maintenance should be carried out regularly to retain the appearance and durability of the floor. The floorcovering should be maintained with regular sweeping and damp mopping using a neutral cleanser, or machine scrubbing with an appropriate pad. Further maintenance instructions are available upon request.

TECHNICAL DATA

DESCRIPTION			
Total thickness	EN 428	mm	2.0mm
Wearlayer thickness	EN 429	mm	2.0mm
weight	EN 430	g/m ²	2950g/m ²
Roll width	EN 426	cm	200cm
Roll length	EN 426	m	24m
CLASSIFICATION			
Classification	EN 685	class	34-43
Fire rating	NF P 92-506	--	M2
	EN 13 501-1	--	Bfl-S1
	ASTM E648	--	Class 1
	GB 8624-2012	--	B1
Toxic testing	GB 18586-2001	--	Pass
Electrical resistance	EN 1815	kv	< 2
	EN 1081	Ω	≥10 ⁹
Slip resistance dry	EN 13893	--	≥0.3
Slip resistance wet	DIN 51130	--	R9
PERFORMANCE			
Abrasion group	EN 649	--	Group T
Dimensional stability	EN 434	%	≤0.40
Residual indentation	EN 433	mm	0.03
Thermal conductivity	EN 12 524	W/(m.K)	0.25
Colour fastness	EN ISO 105 - B02	degree	≥6
Chemical resistance	EN 423	--	Good
Castor wheel test	EN 425	--	Suitable
Impact sound reduction	EN ISO 717/2	dB	Approx. +4
Flexibility	EN 435	--	Excellent
Anti-bacterial and fungicidal	MRSA	--	Good
	DIN EN ISO 846 -A/C	--	Good
Surface treatment			PUR
Underfloor heating		°C	Suitable max.28
CE MARKING			
		EN 14041	