



Easy to install, replace and remove



ECO friendly



More slip-resistant than other types of surface



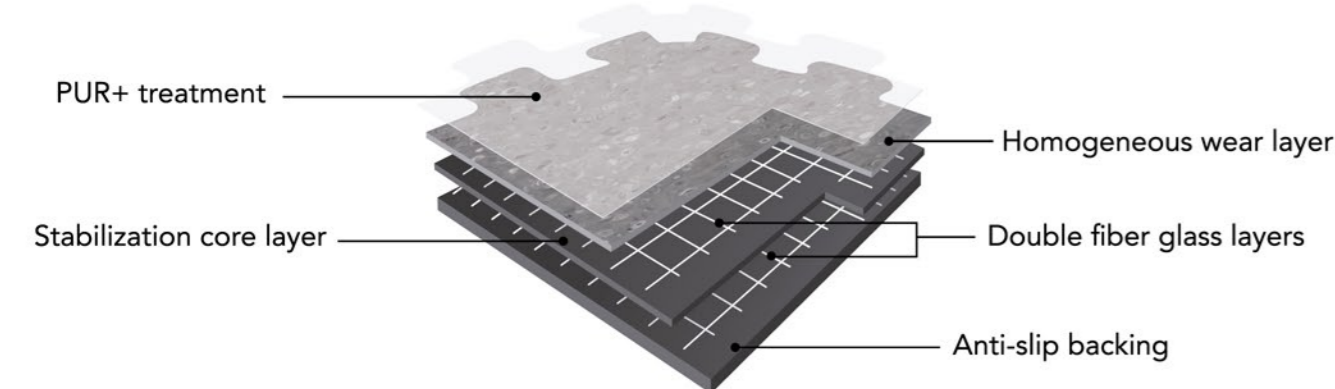
19 dB less noise than tiling when users walk on it



Ultra water-resistant

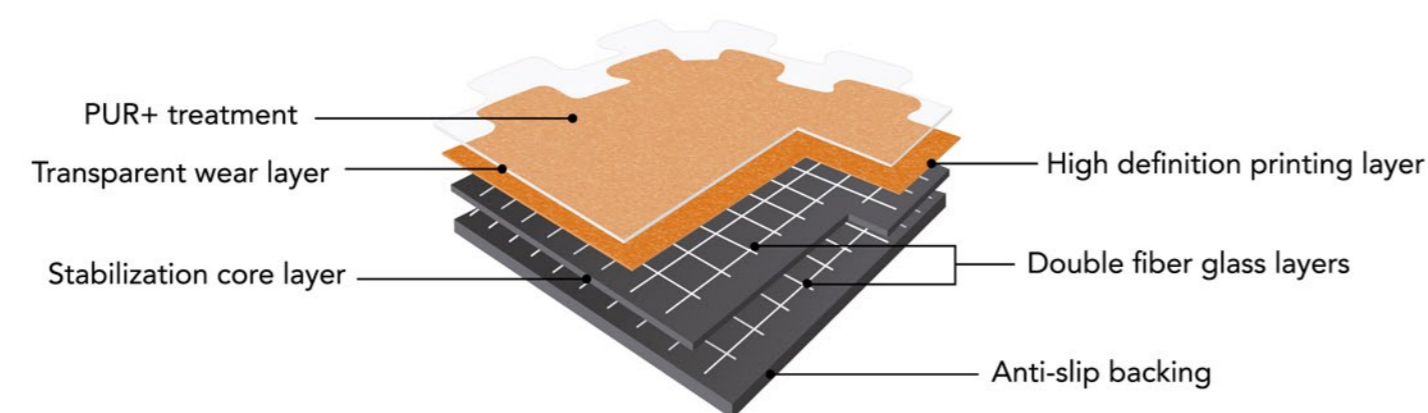


Easy maintenance



TOPLOCK

TOPLOCK is a multi-layered interlocking loose-lay vinyl tile with polyurethane treatment (PUR+), 5mm & 6 mm thickness with a dovetail joint, abrasion group T. It is manufactured by TOPFLOR using a continuous high pressure process. TOPLOCK is reinforced with double fiber glass layers that provides the material with excellent dimensional stability. With a range of designs, it is suitable for high traffic applications: shops, supermarket, fitness center, gym, office, hotel and industrial areas.



TECHNICAL DATA

| DESCRIPTION | | | TOPLOCK | TOPLOCK+ |
|-------------------------------|-----------------|------------------|----------------------|----------------------|
| Total thickness | EN 428 | mm | 5.0mm | 6.0mm |
| Wearlayer thickness | EN 429 | mm | 0.5mm | 2.0mm |
| Weight | EN 430 | g/m ² | 8950g/m ² | 9800g/m ² |
| Size | EN 427 | mm | 914.4x914.4mm | 914.4x914.4mm |
| CLASSIFICATION | | | | |
| Product Specification | -- | -- | -- | -- |
| Classification | EN 685 | class | 34-43 | 34-43 |
| Fire rating | EN 13 501-1 | class | Bfl-S1 | Bfl-S1 |
| | ASTM E648 | -- | Class 1 | Class 1 |
| Static Electrical propensity | EN 1815 | kv | <2 | <2 |
| Slip resistance wet | DIN 51130 | -- | R9 | R10 |
| PERFORMANCE | | | | |
| Abrasion group | EN 649 | -- | Group T | Group T |
| Dimensional stability | EN 434 | % | ≤0.25 | ≤0.25 |
| Residual indentation | EN 433 | mm | ≤0.10 | ≤0.10 |
| Thermal conductivity | EN 12 524 | W/(m.K) | 0.25 | 0.25 |
| Colour fastness | EN 20 105 - B02 | degree | ≥6 | ≥6 |
| Chemical resistance | EN 423 | -- | Good | Good |
| Castor wheel test | EN 425 | -- | Suitable | Suitable |
| Impact sound reduction | EN ISO 717/2 | dB | 9dB | 12dB |
| Flexibility | EN 435 | -- | Good | Good |
| Anti-bacterial and fungicidal | -- | -- | Good | Good |
| Surface treatment | -- | -- | PUR+ | PUR+ |
| Underfloor heating | -- | C | Suitable max.28 | Suitable max.28 |
| CE MARKING | | | | |
| CE | EN 14041 | | | |

6010

MORE COLORS UPON REQUEST



INTERLOCKING TILES

TOPLOCK

Topflor

TOPLOCK

INTERLOCKING TILES



Topflor

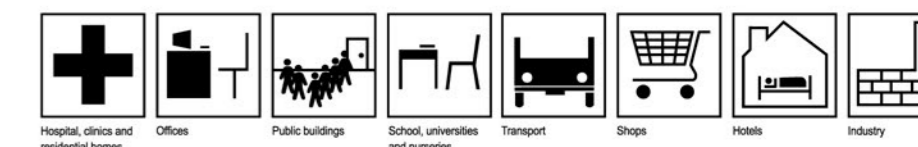
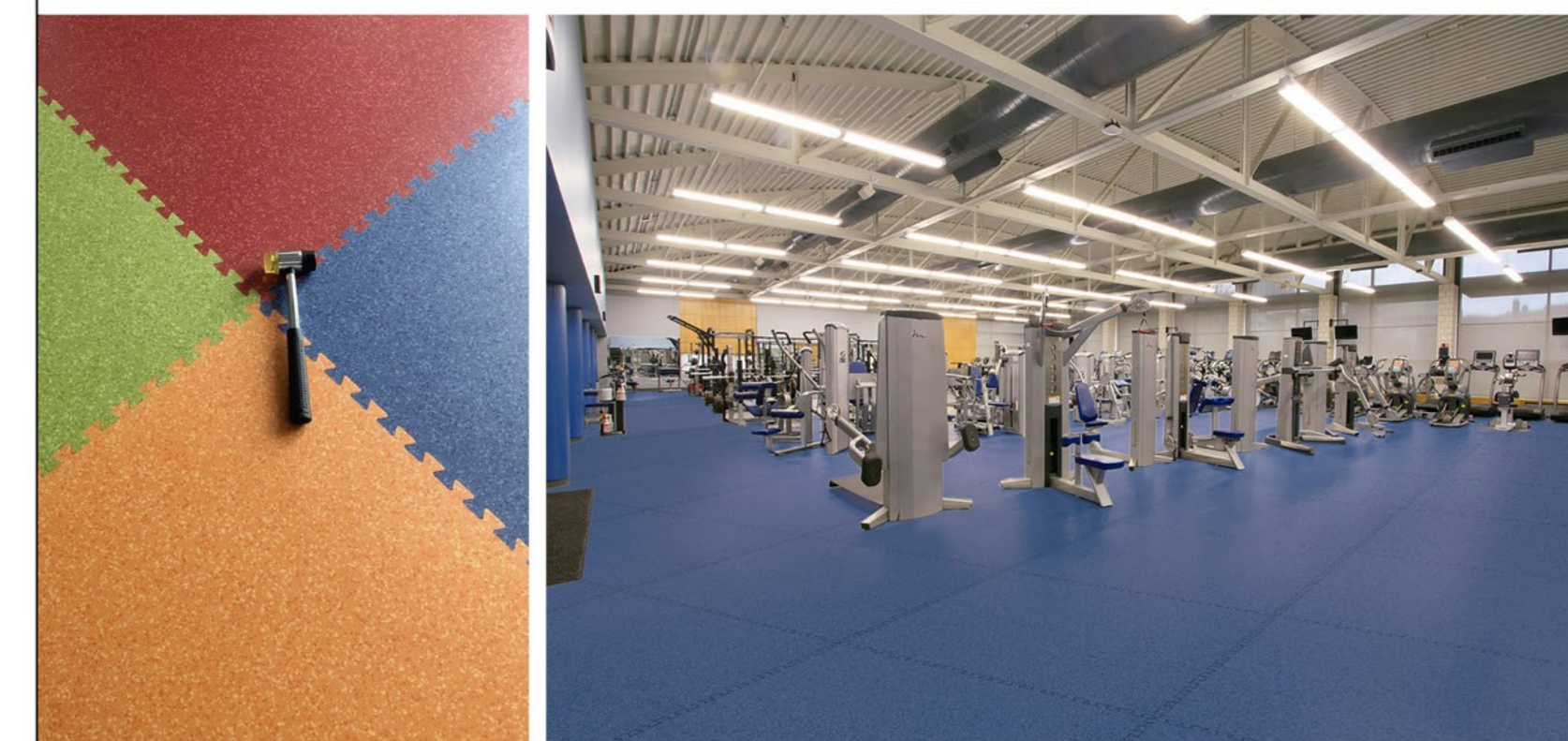
The ultimate flooring
The ultimate performance



Designed for performance

Creating the ultimate flooring experience

The best solution for every area and every application

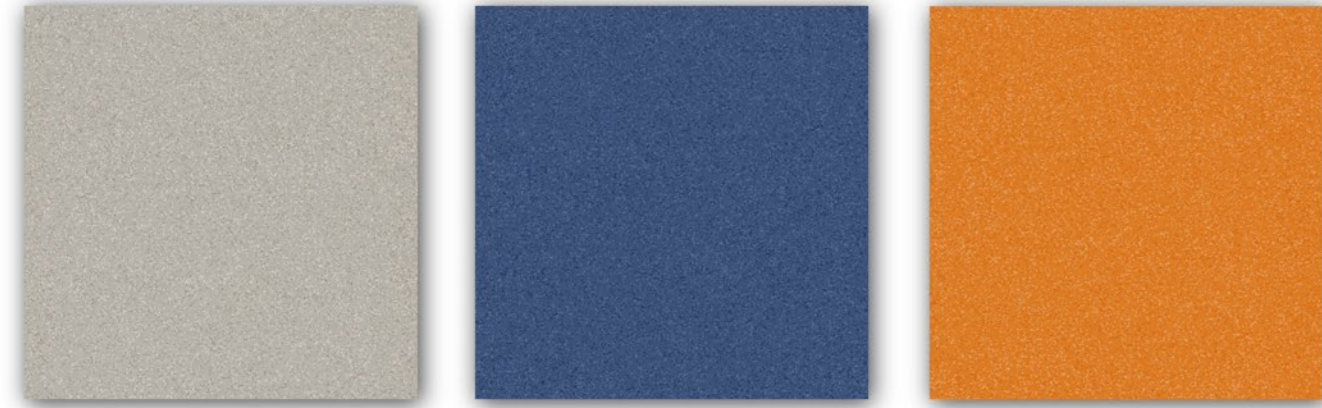


TOPLOCK

914.4x914.4mm
36"x36"
5mm
PUR+
R9



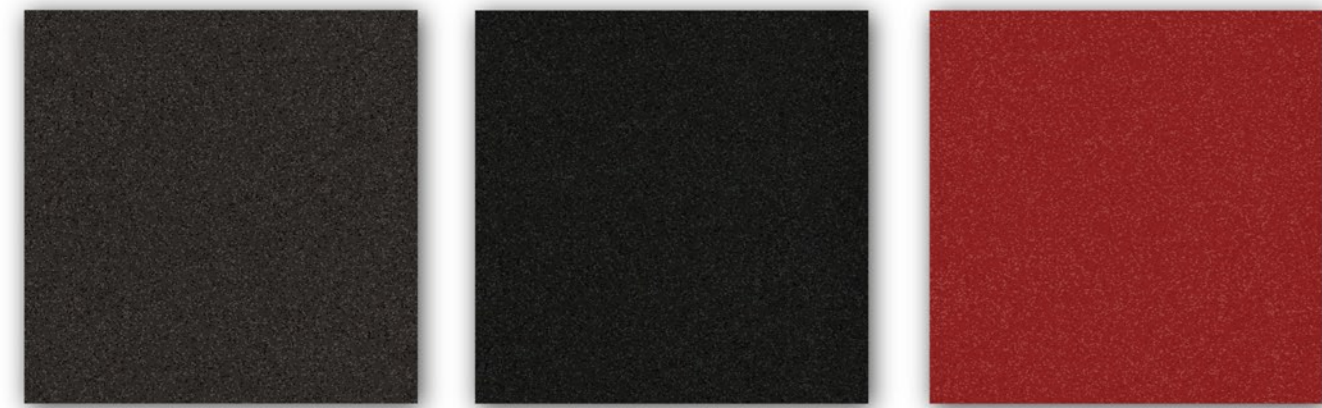
5101 Beige 5102 Sky Blue 5103 Light Green



5104 Light Grey 5105 Blue 5106 Orange



5107 Grey 5108 Brown 5109 Medium Orange



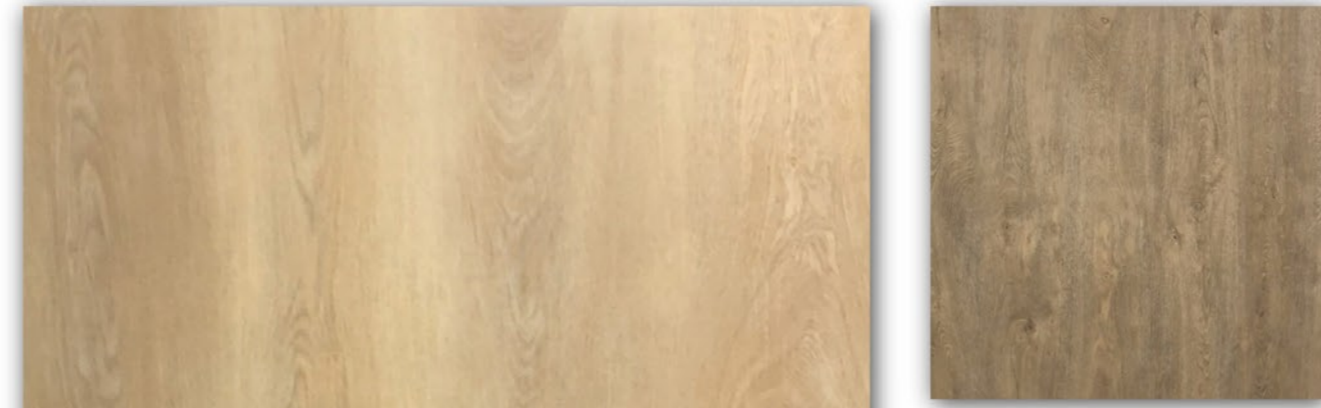
5110 Dark Grey 5111 Black 5112 Dark Red

TOPLOCK

914.4x914.4mm
36"x36"
5mm
PUR+
R9



5201 5202 5203



5204 5205



5206 5207



5208 5209 5207

TOPLOCK

914.4x914.4mm
36"x36"
5mm
PUR+
R9



5301 5302 5303



5304 5305 5306



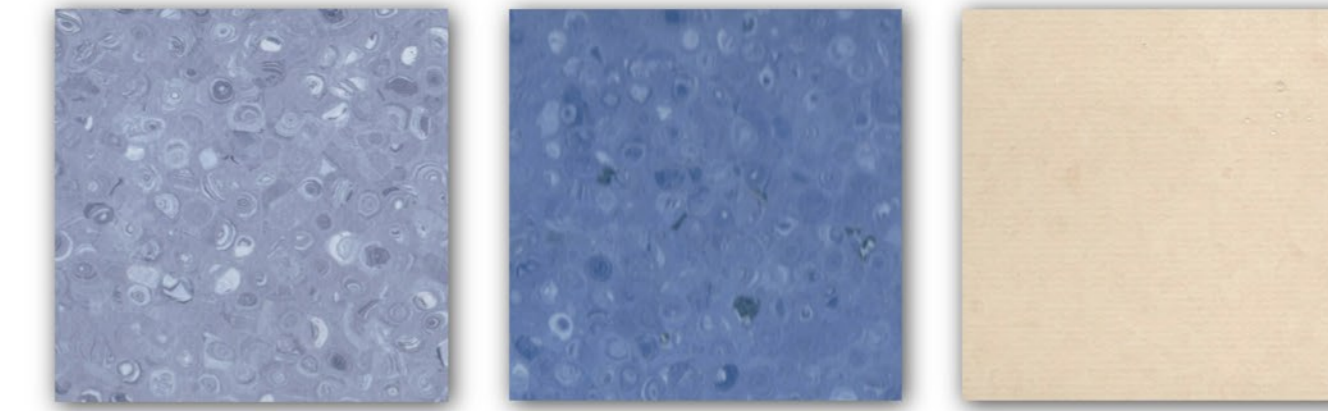
5307 5308 5309



5310 5311 5312

TOPLOCK+

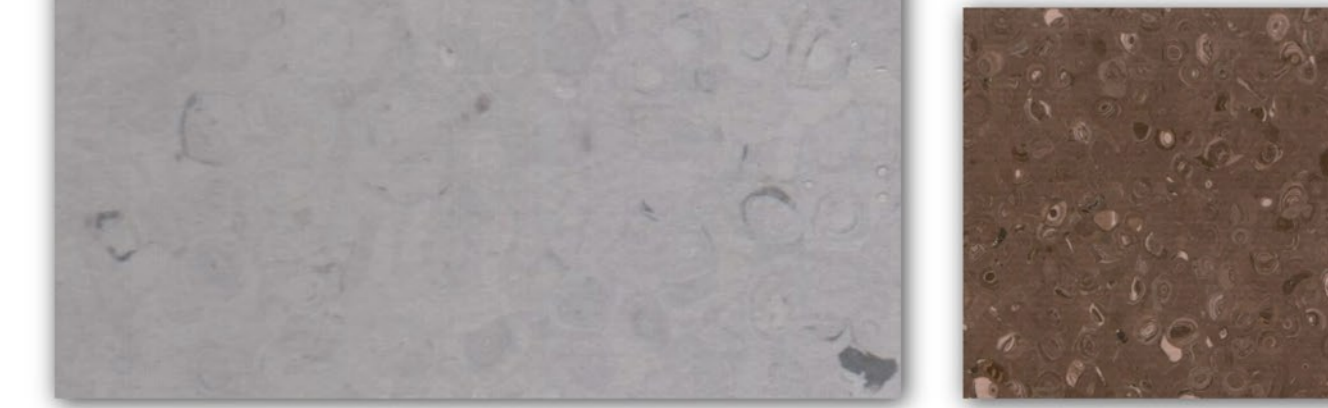
914.4x914.4mm
36"x36"
6mm
PUR+
R10



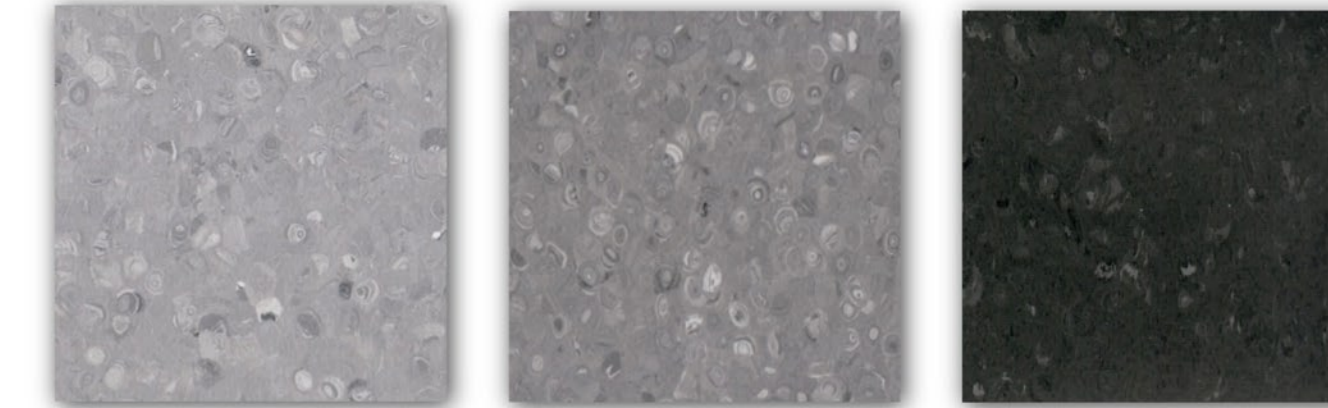
6001 6002 6003



6004 6005



6006 6007



6008 6009 6007