

# Diamond

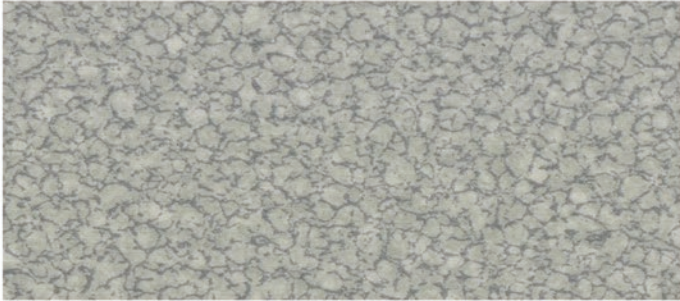
Heterogeneous Vinyl


- > Education
- > Healthcare
- > Offices
- > Leisure
- > Retail
- > Public building

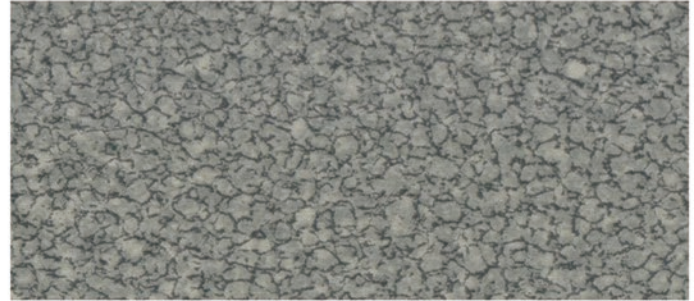



**Topflor**

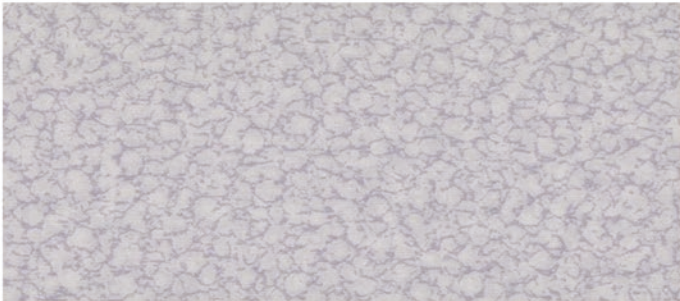
The ultimate flooring  
The ultimate performance




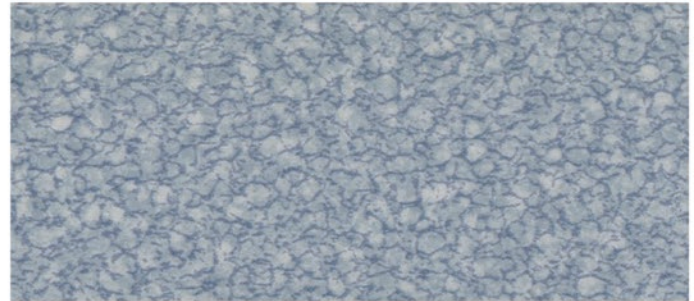
 2401




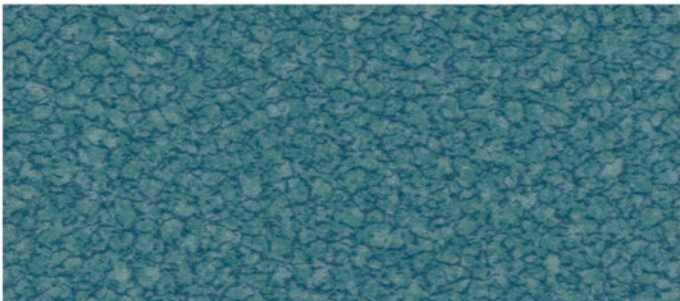
 2402




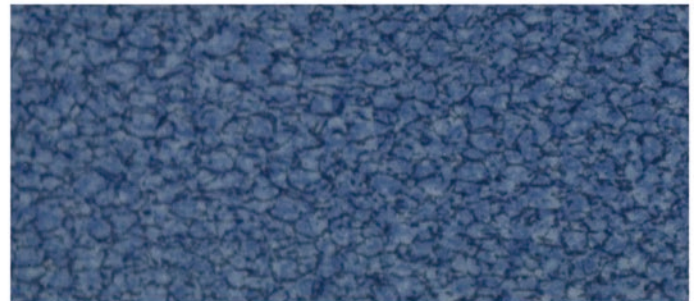
 2403



 2404




 2405




 2406




 2407



 2408




 2409



 2410




 2411




 2412




 2413



 2414




 2415



 2416




 2417



 2418



 2419

# Diamond



Diamond heterogeneous vinyl flooring offers good resistance to indentation, abrasion and tearing. With a range of designs that provide outstanding creative opportunities, it is ideal for high-traffic areas in education, healthcare, offices, leisure and retail.

The surface benefits from UV treatment means no wax and no polish for life. It also requires less water and detergents for cleaning, providing clear benefits for both the environment and for life cycle costs.

## INSTALLATION

Diamond vinyl sheet should be stored vertically. Installation should be made in accordance with installation guidelines supplied and regularly updated by our technical department. Installation should be carried out in accordance with local standards. Subfloor to be smooth, hard, clean and dry prior to laying.

Where applicable the subfloor must incorporate an effective Damp Proof Membrane. The material must be allowed to acclimatise 24 hours prior to installation in a room temperature of between 18-24 °C. All seams must be heat welded using the matching weld rod.

## MAINTENANCE

Maintenance should be carried out regularly to retain the appearance and durability of the floor. The floor covering should be maintained with regular sweeping and damp mopping using a neutral cleanser, or machine scrubbing with an appropriate pad. Further maintenance instructions are available upon request.

## TECHNICAL DATA

DESCRIPTION			
Total thickness	EN 428	mm	2.0mm
Wearlayer thickness	EN 429	mm	0.40mm
Weight	EN 430	g/m <sup>2</sup>	2950g/m <sup>2</sup>
Roll width	EN 426	cm	200cm
Roll length	EN 426	m	20m

CLASSIFICATION			
Classification	EN 685	class	42
Fire rating	NF P 92-506	--	M2
	EN 13 501-1	--	Class Bfl-S1
	ASTM E 648	--	Class 1
	GB 8624-2006	--	GB 8624 B1
Toxic testing	GB 18586-2001	--	Pass
Electrical resistance	EN 1815	kv	<2
	EN 1081	Ω	≥10 <sup>9</sup>
Slip resistance dry	EN 13893	--	≥0.3
Slip resistance wet	DIN 51130	--	R9

PERFORMANCE			
Abrasion group	EN 649	--	Group T
Dimensional stability	EN 434	%	≤0.40
Residual indentation	EN 433	mm	0.03
Thermal resistance	EN 12 524	W/(m.K)	0.25
Colour fastness	EN ISO 105-B02	degree	≥6
Chemical resistance	EN 423	--	Good
Castor wheel test	EN 425	--	Suitable
Impact sound reduction	EN ISO 717/2	dB	15
Flexibility	EN 435	--	Excellent
Anti-bacterial and fungicidal	MRSA	--	Very Good
	DIN EN ISO 846-A/C	--	Good
Surface treatment			UV
Underfloor heating		°C	Suitable max. 28

## CE MARKING



EN 14041

