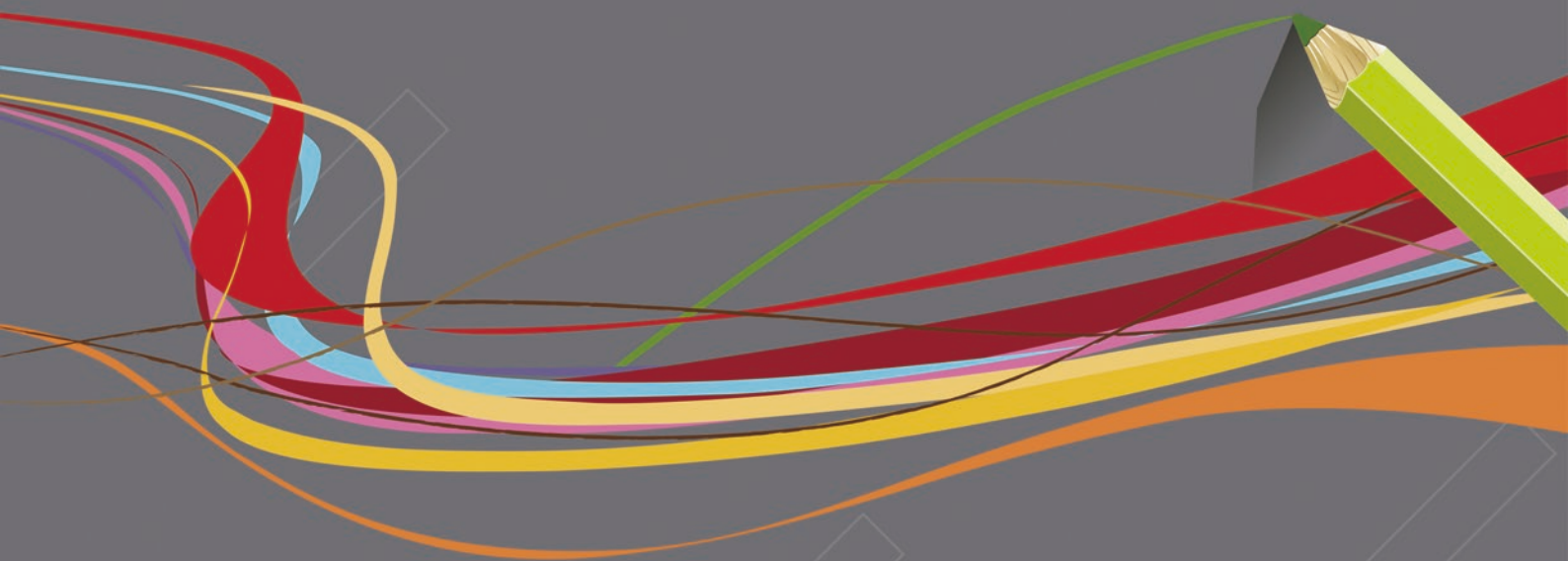


UNI-COLOR

LUXURY VINYL TILES



- > Offices
- > Education
- > Healthcare
- > Retail
- > Show
- > Public building

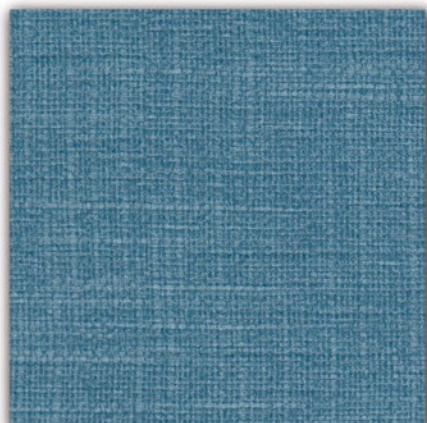


Topflor

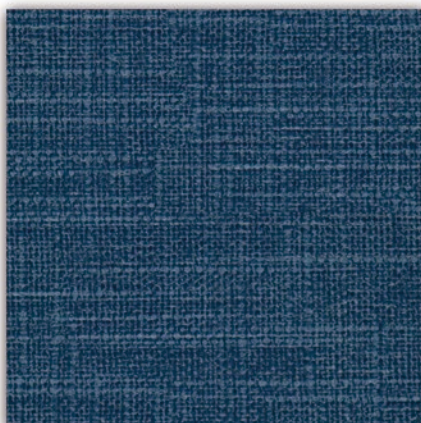
The ultimate flooring
The ultimate performance

ART

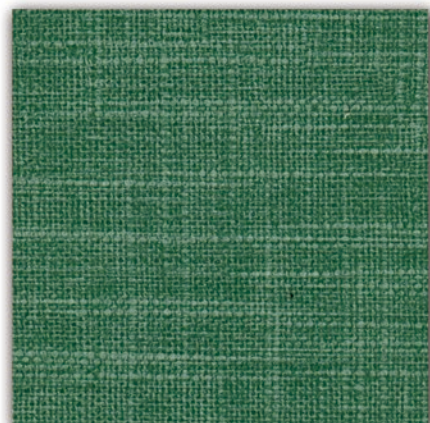
Size: 18" × 18" (45.7cm × 45.7cm)
Thickness: 3.0mm



AR-3301



AR-3302



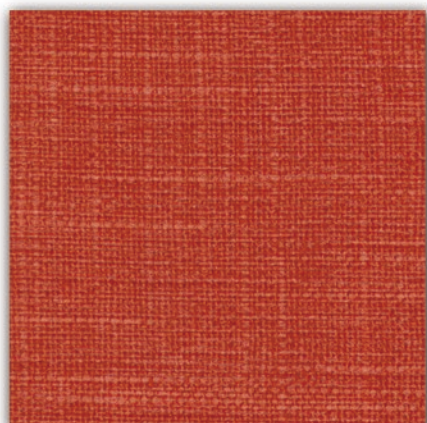
AR-3303



AR-3304



AR-3306



AR-3305



AR-3307



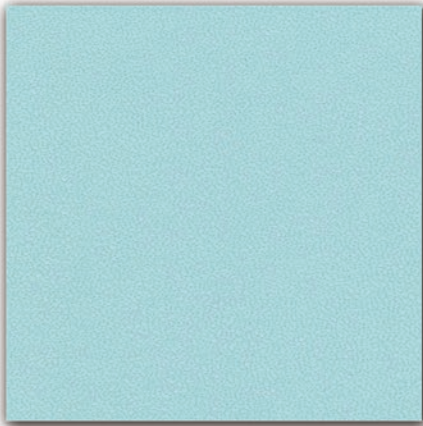
AR-3308



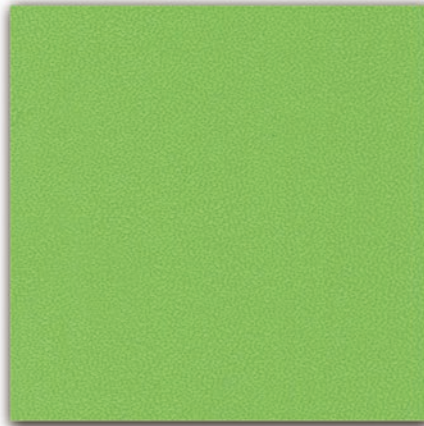
AR-3309

DECO

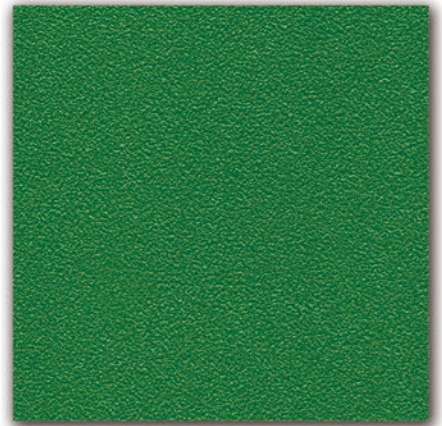
Size: 18" × 18" (45.7cm × 45.7cm)
Thickness: 3.0mm



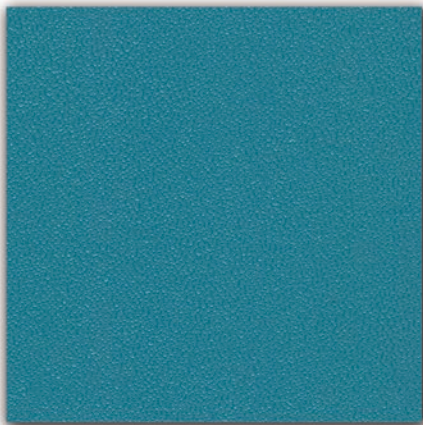
DE-3401



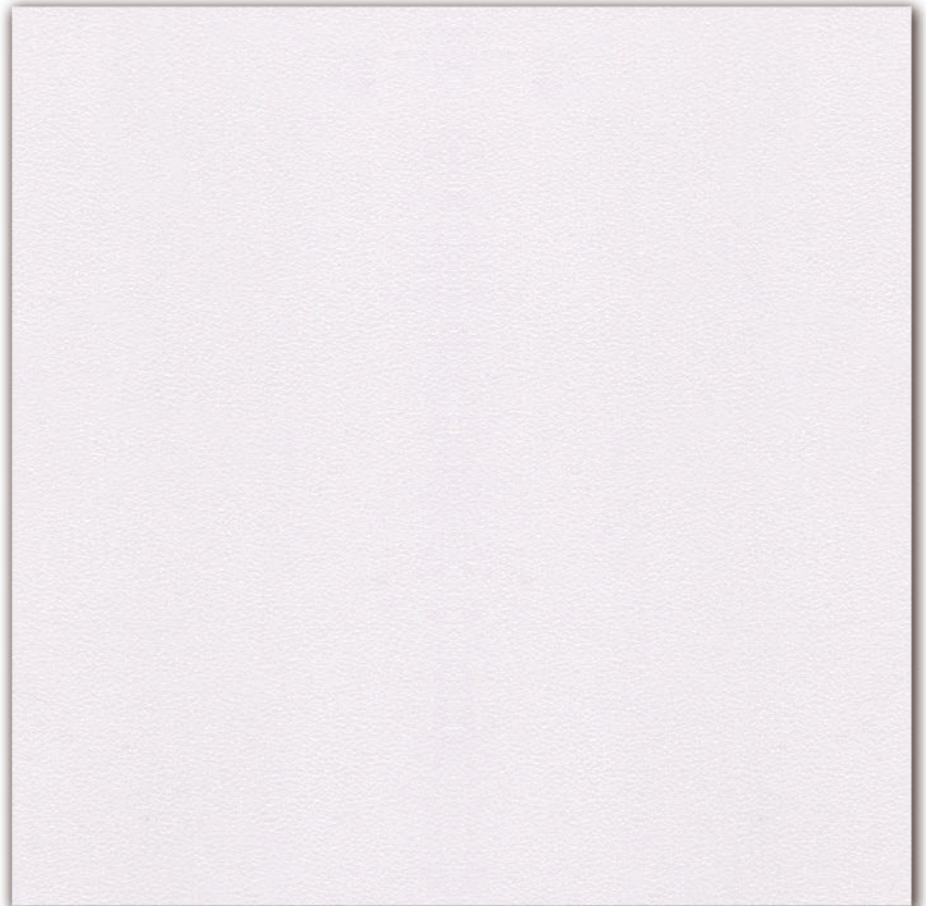
DE-3402



DE-3403



DE-3404



DE-3406



DE-3405



DE-3407



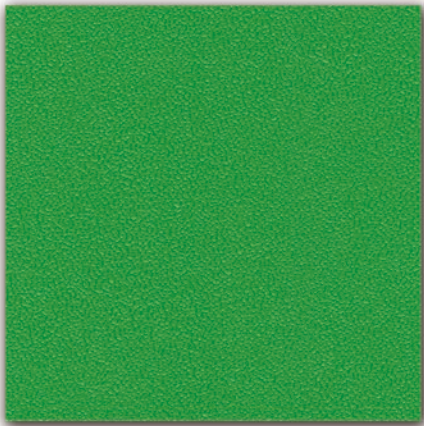
DE-3408



DE-3409

DECO

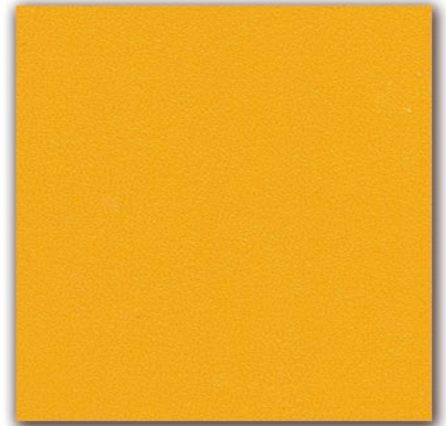
Size: 18" × 18" (45.7cm × 45.7cm)
Thickness: 3.0mm



DE-3410



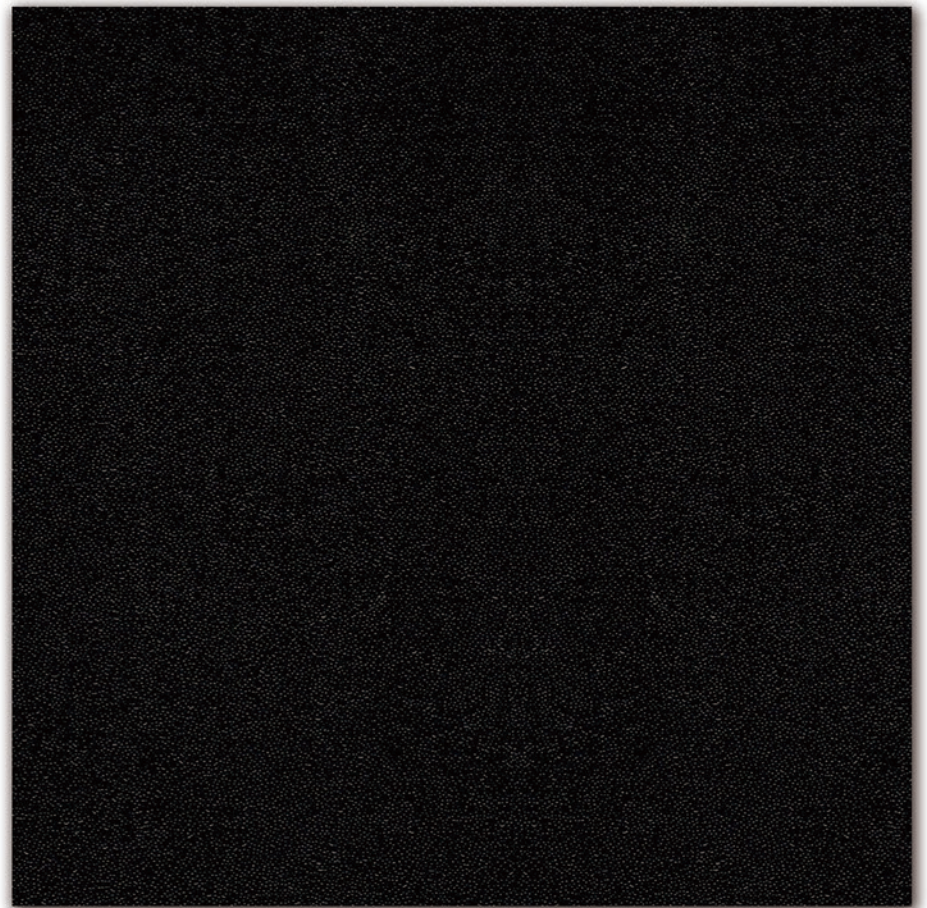
DE-3411



DE-3412



DE-3413



DE-3415



DE-3414



DE-3416

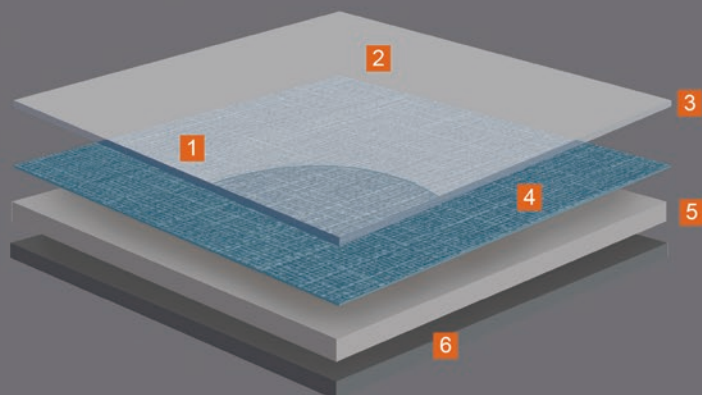


DE-3417



DE-3418

STRUCTURE OF UNI-COLOR



- 1. Surface embossing**
Textures close to real materials
- 2. PUR reinforcement**
Extreme resistance and easy low cost maintenance
- 3. Transparent wear layer**
Exceptional hardwearing and indentation resistant
- 4. High definition printing layer**
With great customisation possibilities
- 5. Unique composite structure**
Dimensional stability and excellent resistance to tear and indentation
- 6. PVC backing**
Suitable for either floating or glue-down installation



Offices



Stores & Shops



Gym



Dance



Housing



Education



Healthcare



Aged Care

TECHNICAL INFORMATION

Installation Guide

- The subfloor surfaces must be level, flat, clean, dry, smooth, and free of movement. All surface imperfections should be filled and sanded with a portland cement-based latex patching compound.
- Room temperature must be maintained at 18°C or higher before and during installation.
- The flooring must be allowed to acclimate in the room to be installed for a minimum of 24 hours and be stacked flat on the floor to avoid bending the floor.
- Prior to installation, please ensure that both color and lot # are the same.

Maintenance

- Regularly sweep floor to remove sand and grit that can scratch floor.
- For best results, use only water with a mop. Avoid flooding the floor with too much water.
- For heavily soiled areas, use a neutral pH balanced floor cleaner.
- Use caution when lifting boxes.
- Promptly remove any standing water to avoid slippage.
- Keep Uni-color on the flat surface to keep it from warping.

Size & Packing

Size	Thickness	/ BOX	/ BOX
45.7cm×45.7cm 18"×18"	3.0mm	16pcs	3.34m ²
45.7cm×91.4cm 18"×36"	3.0mm	8pcs	3.34m ²

Technical Data

Classification	Standard	Art 3.0	Deco 3.0
Total thickness	EN 428	3.0mm	3.0mm
Wear layer thickness	EN 429	0.3mm	0.4mm
Total weight	EN 430	5520g/m ²	5520g/m ²
Surface treatment	---	PUR	PUR
Classification	EN 685	33-42	33-42
Reaction to fire	EN 13501-1	Bfl-s1	Bfl-s1
Electrical properties	EN 1815	<2kV	<2kV
Slip resistance	DIN 51130	R10	R9
Abrasion group	EN 660-2	Group T	Group T
Curl resultant to heat	EN 434	≤2mm	≤2mm
Residual indentation	EN 433	≤0.05mm	≤0.05mm
Impact sound reduction	EN ISO 717-2	5dB	6dB
Castor chair	EN 425	No damage	No damage
Thermal resistance	EN ISO 12524	0.25W/(m.K)	0.25W/(m.K)
Light fastness	EN ISO 105-B02	≥6	≥6
Chemical resistance	EN 423	Good	Good

